

# Custom Woodworking

WoodworkingNetwork.com

## BUSINESS

\$10 | AUGUST 2013

How Happy Owl  
Won Digital  
Cashbox Sales

## CNC Software Connects CJS MILLWORK

From AWFS: Visionary Technology Awards



VANCE

Flip over for your issue of  
CLOSETS  
TOTAL STORAGE SOLUTIONS





# Grizzly Industrial

**Summer Sale**  
**ENDS SEPTEMBER 21<sup>ST</sup>**  
PLEASE GO TO GRIZZLY.COM TO SEE ALL SALE PRICES

FREE 764 PAGE  
CATALOG!



## 10" COMPACT SLIDING TABLE SAW

### w/ SCORING BLADE ARBOR

- Motor: 5 HP, 220V, single-phase
- Sliding table size: 12 $\frac{1}{4}$ " x 39 $\frac{3}{4}$ "
- Main blade arbor:  $\frac{5}{8}$ "
- Main blade tilt: 0-45°
- Main blade arbor speed: 4000 RPM
- Depth of cut: 3 $\frac{1}{8}$ " @ 90°, 2 $\frac{1}{4}$ " @ 45°
- Scoring blade size: 3 $\frac{1}{8}$ "
- Scoring blade arbor: 22mm
- Scoring blade arbor speed: 8000 RPM
- Scoring blade tilt: 0-45°
- Max. dado width: 1 $\frac{1}{2}$ "
- Approx. shipping weight: 584 lbs.



**MADE IN TAIWAN**

ALSO CUTS DADOS



5 HP, Single-Phase

**G0700 ONLY \$2595<sup>00</sup>**



## 10" SLIDING TABLE SAWS

- Motor: 5 HP, 230V, single-phase or 7 $\frac{1}{2}$  HP, 220V/440V\*, 3-phase
- Main table size: 14 $\frac{3}{8}$ " x 27" • Sliding table size: 12 $\frac{1}{4}$ " x 63"
- Main blade arbor:  $\frac{5}{8}$ " • Main blade arbor speed: 4000 RPM
- Scoring blade size: 3 $\frac{1}{8}$ " • Scoring blade arbor: 22mm
- Depth of cut: 3 $\frac{1}{8}$ " @ 90°, 2 $\frac{1}{4}$ " @ 45°
- Max. rip capacity: 33"
- Approx. shipping weight: 688 lbs.

(G0623X ONLY)



**78 $\frac{1}{2}$ " LENGTH  
OF CROSS CUT  
EVEN CUTS DADOS**

**MADE IN TAIWAN**

EXTREME  
SERIES

5 HP, Single-Phase

**G0623X ONLY \$2995<sup>00</sup>**

7 $\frac{1}{2}$  HP, 3-Phase

**G0623X3 ONLY \$3195<sup>00</sup>**



## 12" SLIDING TABLE SAW

### w/ SCORING BLADE MOTOR

- Main motor: 7 $\frac{1}{2}$  HP TEFC, 220V/440V\*, 3-phase, prewired for 220V
- Scoring motor: 1 HP TEFC, 220V/440V\*, 3-phase
- Main blade size: 12", Arbor: 1", Tilt: 0-45°
- Depth of cut @ 90°: 3 $\frac{1}{8}$ ", @ 45°: 2 $\frac{3}{8}$ "
- Scoring blade size: 4 $\frac{3}{4}$ ", Arbor: 20mm, Speed: 8000 RPM
- Scoring blade tilt: 0-45° • Sliding table size: 126" x 13 $\frac{3}{4}$ "
- Main table dimensions: 35 $\frac{1}{4}$ " x 21 $\frac{1}{2}$ "
- Dust ports: 2 $\frac{1}{2}$ " and 5"
- Approx. shipping weight: 1468 lbs.

**MADE IN TAIWAN**



7 $\frac{1}{2}$  HP, 3-Phase

**G0699 ONLY \$5995<sup>00</sup>**



## 12"(305MM), 6 $\frac{1}{2}$ HP, 3-PHASE SLIDING TABLE SAW

**MADE IN GERMANY**

**124" LENGTH OF  
CROSS CUT**

- Main motor: 6 $\frac{1}{2}$  HP, 220V, 3-phase
- Scoring blade motor: 1 HP, 220V, single phase
- Main blade size: 12", Arbor: 30mm, Tilt: 0-45°, Speed: 4,000 RPM
- Depth of cut @ 90°: 4 $\frac{1}{4}$ ", @ 45°: 3"
- Scoring blade size: 4 $\frac{3}{4}$ " (120mm), Arbor: 20mm, Tilt: 0-45°
- Max. rip capacity: 52" • Length of cross cut: 124"
- Main table dimensions: 65 $\frac{3}{8}$ " x 53 $\frac{1}{2}$ "
- Approx. shipping weight: 1552 lbs.



6 $\frac{1}{2}$  HP, 3-Phase

**G0674 \$9450<sup>00</sup> SALE \$7995<sup>00</sup>**



## 14" SLIDING TABLE SAW

**MADE IN TAIWAN**

- Main motor: 10 HP, 220V/440V\*, 3-phase
- Scoring motor: 1 HP, 220V/440V\*, 3-phase
- Main blade size: 14", Arbor: 1", Tilt: 0-45°, Speeds: 4000, 5000, 6000 RPM
- Depth of cut @ 90°: 4 $\frac{1}{8}$ ", @ 45°: 2 $\frac{1}{2}$ "
- Scoring blade size: 4 $\frac{3}{4}$ ", Arbor:  $\frac{7}{8}$ " (22mm), Tilt: 0-45°
- Sliding table size: 126" x 13 $\frac{3}{4}$ "
- Length of crosscut: 123" • Max. rip capacity: 48 $\frac{1}{2}$ "
- Main table dimensions: 39 $\frac{1}{2}$ " x 24"
- Approx. shipping weight: 1944 lbs.

**10" TRAVEL!**



10 HP, 3-Phase

**G0493 \$7895<sup>00</sup> SALE \$7500<sup>00</sup>**



## 14" INDUSTRIAL DUTY SLIDING TABLE SAW

- Main motor: 10 HP, 220V/440V\*, 3-Phase
- Main blade size: 14", Arbor: 1", Speeds: 3000, 4000, 5000, 6000 RPM
- Main blade tilt: 0-45° • Depth of cut @ 90°: 4", @ 45°: 2 $\frac{1}{2}$ "
- Scoring motor: 1 HP, 220V/440V\*, 3-Phase
- Scoring blade size: 4 $\frac{3}{4}$ ", Arbor:  $\frac{7}{8}$ ", Speed: 8000 RPM, Tilt: 0-45°
- Sliding table size: 15" x 126"
- Max. rip capacity: 52 $\frac{1}{2}$ " • Cross cutting length: 126"
- Dust ports: 2" & 5"
- Approx. shipping weight: 2873 lbs.

**4" DEPTH OF  
CUT**



**MADE IN TAIWAN**

10 HP, 3-Phase

**G0501 ONLY \$11,500<sup>00</sup>**



\*To maintain machine warranty, 440V & 460V operation requires additional conversion time and a \$250 fee. Please contact technical service for complete information before ordering.

### CREDIT CARDS



**1-800-523-4777**

**grizzly.com**

VIEW VIDEOS AT  
grizzly.com

### FOLLOW US ON:



TECHNICAL SERVICE:

570-546-9663  
FAX: 800-438-5901

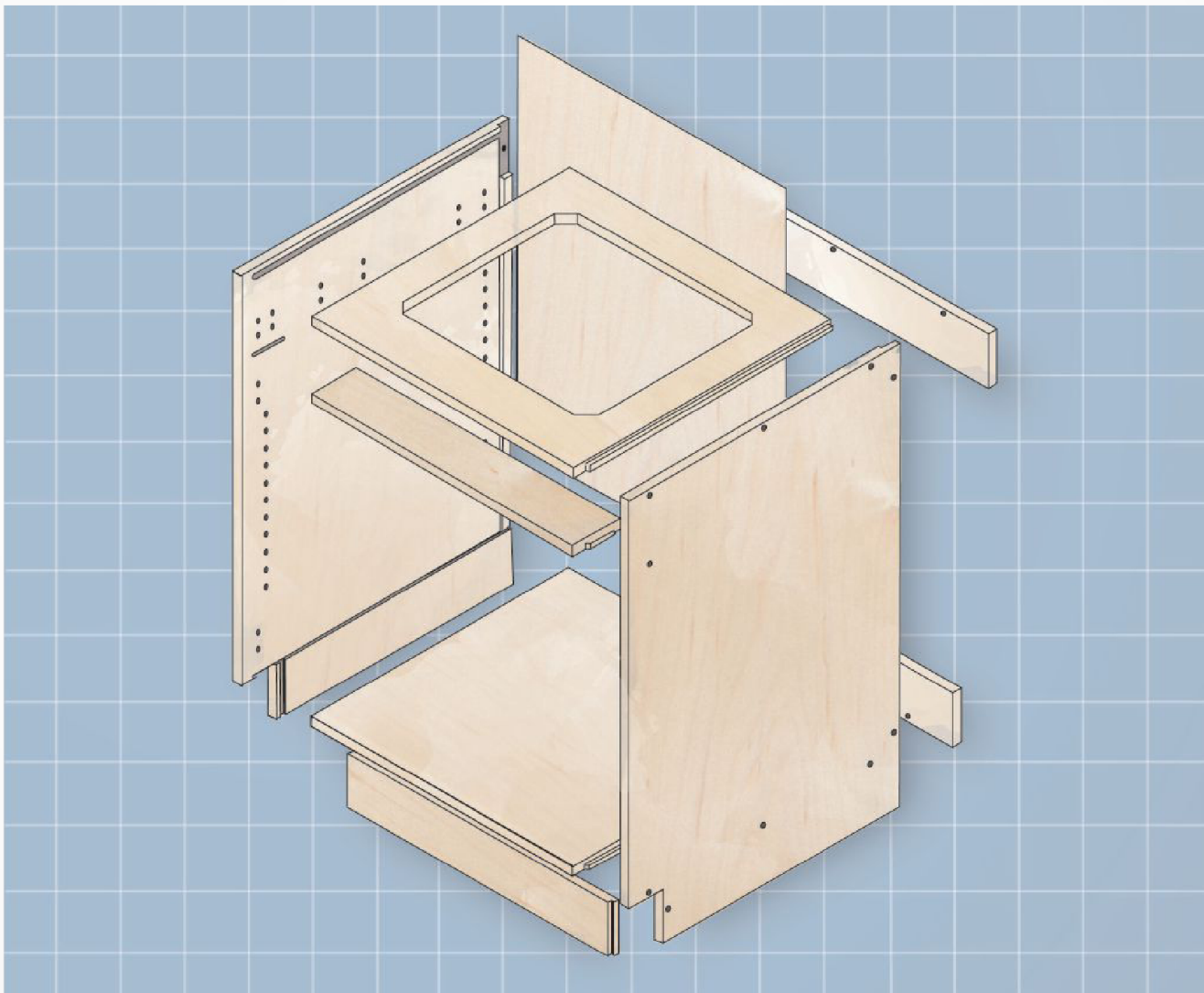
3 GREAT SHOWROOMS! BELLINGHAM, WA • MUNCY, PA • SPRINGFIELD, MO



MENTION THIS CODE  
WHEN PLACING YOUR ORDER

# STREAMLINE™

SIMPLIFIED PROCESS, ECONOMICAL PRICES



+ | [www.decore.com/streamline](http://www.decore.com/streamline)



🔍 RTA Frameless Components

## [RTA Frameless Components, FREE Online Design Software...](http://www.decore.com/streamline)

[www.decore.com/streamline](http://www.decore.com/streamline)

STREAMLINE™ is a free, easy-to-use, design software used for ordering ready-to assemble, frameless components online! All orders are custom and typically ship in 6 working days! To obtain a secure User ID and Password, call us at 800-729-7277 or email [info@decare.com](mailto:info@decare.com)



 **DECORE-ATIVE SPECIALTIES™**  
*Custom Cabinet Components since 1965*

[www.decore.com](http://www.decore.com)

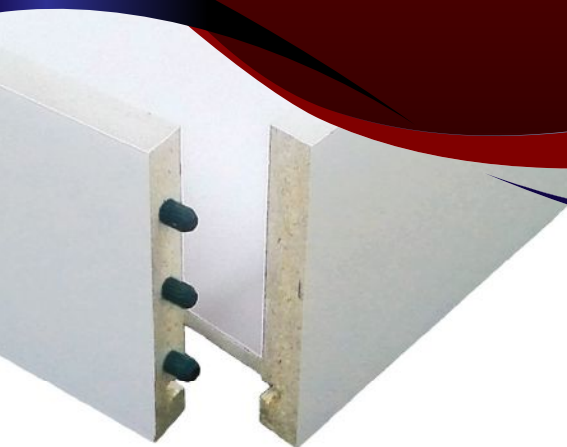
© 2012 Decore-ative Specialties and Decore-ative Specialties NC, LLC

Find us on



# *Increase your productivity*

with one click at [DrawerConnection.com](http://DrawerConnection.com)



- ★ Wide selection of wood species
- ★ Instant Online Quoting and Ordering
- ★ Meets all AWI specifications
- ★ On-time delivery
- ★ FSC certified



**877.917.4887**

**DRAWER CONNECTION, INC.**

"Get Connected With Quality"



[DrawerConnection.com](http://DrawerConnection.com)



# Contents

woodworkingnetwork.com

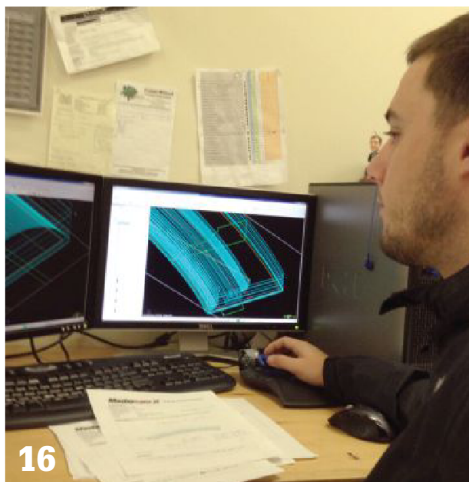
AUGUST 2013  
Volume 23 Issue 6



28

## Departments

First Volley	6
TechSpot	10
Editor's Choice	12
Lumberyard	14
Toolbox	21
Finishing	22
Wood Pro	24
Job Board	26
Shop Tips	32



16

## Features

- 14 Lumberyard**  
Outwater Plastics introduced real wood veneer sheets and real wood veneer edging products.
- 16 Case Study: CJS Millworks**  
CAM software automates and speeds special order work through the CNC at CJS Millwork.
- 28 Cover Story: Happy Owl**  
Happy Owl Studio handles batch custom wood manufacturing for its iPad wood cash registers in leased space.
- 35 AWFS Visionary Awards**  
Visionary New Product awards were handed out last month in Las Vegas to seven companies exhibiting at AWFS Fair 2013.
- 41 Business Opportunity**  
For clients seeking an alternative to cabinet replacement, refacing opens the door to new business opportunities for custom woodworkers.

Cover photo: Happy Owl Studio

## OnlineVideo

From WoodworkingNetwork.com/video

### Robohand Helps Carpenter

South African carpenter Richard Van As, who lost four fingers in a saw injury, worked with a Washington state designer and 3D printing to construct the Robohand. It is now also being used by about 100 children who were born with birth defects or suffered injuries.



## Digital Editions

Tablet-ready and e-reader compatible digital editions of *Custom Woodworking Business* are free at [Woodworkingnetwork.com/articles/archives](http://Woodworkingnetwork.com/articles/archives)

## SocialMedia



Twitter: news feeds, blogs, article links and scuttlebutt.



Facebook: Great work, news feeds, loopo stuff, posts.

CUSTOM WOODWORKING BUSINESS (ISSN/USPS 1058403X) is published 8 times a year by Vance Publishing Corporation, 400 Knightsbridge Parkway, Lincolnshire, IL 60069. All statements, including product claims, are those of the person or organization making the statement or claim. The publisher does not adopt any such statement or claim as its own, and any such statement or claim does not necessarily reflect the opinion of the publisher. Subscription rates: U.S.A., Possessions, Mexico and Canada—\$55, per year, single copies \$10, including postage, foreign —\$125, per year, includes air speed delivery. Periodicals postage paid at Lincolnshire, IL, 60069 and at additional mailing offices. CWB Custom Woodworking Business is registered in the United States Patent and Trademark Office. Copyright 2013, Vance Publishing Corporation Printed in the USA. POSTMASTER: Send address changes to Custom Woodworking Business, P.O. Box 1421, Lincolnshire, IL 60069-1421. Archives of Custom Woodworking Business can be found on Woodworking Network at [woodworkingnetwork.com](http://woodworkingnetwork.com).

## AWI: Better and Stronger

The Architectural Wood Institute – holding its 61st Annual Convention Oct. 9-11 in Orlando – is a pillar of the woodworking industry, though some of its endeavors may escape the notice of non-members. Besides being highly accomplished in architectural millwork and buildouts, members are among the most savvy operations in the woodworking interiors field.

AWI sets and maintains, through careful rigor and review, the Architectural Woodwork Standards – the Bible of specification, construction and installation of interior architectural woodwork. AWI helped launch an affiliate AWI Quality Certification Program, which provides certification credentials to woodworking firms who, through comprehensive testing and inspection, demonstrate the ability to fabricate, finish and/or install work in accordance with the quality grade criteria set forth in those Architectural Woodwork Standards.

### Woodwork Career Alliance

AWI also administered the launch of the Woodwork Career Alliance (WCA), which verifies machine operating skills of woodworkers with its Passport Program. WCA is also developing training and certification programs for education centers, in schools and businesses across the country, addressing our need for skilled workers.

AWI's new *Cost of Doing Business Survey* found its members are doing better, both hiring and investing, which they richly deserve for all they provide our industry.



Bill Esler, Editor in Chief  
besler@vancepublishing.com



## A Superglue for Wood?

Online readers posed questions on Bioformix Nexabond high viscosity, water-free adhesive for wood products (aka, 'Superglue for wood'), with answers provided by the manufacturer's CEO Adam Malofsky.

**As a woodturner**, I've been using superglues for finishing pens and gluing layered bowls. I've been hearing that turners who sell their super-glued work in galleries have had pieces returned with failed joints. Now galleries are refusing to take any work bonded with superglue. How will you assure woodworkers in general, and woodturners specifically, that this glue is different? How can we be assured this bond will not deteriorate? **Woodturner George, Georgia, USA**

**Malofsky responds:** Turners are using those brittle adhesives for a purpose for which they were never intended. The new Bioformix cyanoacrylate adhesives undergo extensive humidity and thermal cycling testing, and results are excellent versus conventional cyanoacrylate and white glue adhesives. This is the first time such adhesives have been formulated specifically for wood and for how woodworkers assemble joints. We work with well-known turner, David Heim [pictured above at AWFS Fair 2013].

**I'm curious** as to what the shelf life is and storage requirements for Nexabond. Would the performance of this product be affected if it were to freeze?

**Glenn Weagle, Instructor, Hopkinton High, Georgia**

**Malofsky responds:** It should not be, as long as it is not open and accumulating moisture. I store the competitive products and ours in a refrigerator for maximum shelf life, but cold adhesive will take longer to cure. Let it warm a bit. Our current well sealed shelf life at ambient temperatures is at least two years.

**Let's do that math on this...** 16 oz is the largest bottle at \$54.96; 5 gallons would cost \$2,198. Even the most expensive Titebond is only \$200 for 5 gallons. They need to figure out how to make this less expensive. - **Jim, Georgia**

**Malofsky responds:** Your point is on target and the math does work. First, you use about 80% to 90% less adhesive in much tighter joints than with white glue, so glue costs come down to \$219 to \$400. The process savings is where the real money is. No water means no waiting - immediate finishing, no swelling, no sanding, no work in process. At one shop, the time to build a door dropped by 80% and to finish it completely by over 90%. For a joint using 5 cents worth of our adhesive, the time savings is in the 50 cent to a dollar range. Now the cost is negative, something white glue cannot do.





# TEC SOFT-CLOSE

## MADE IN THE USA

There is nothing complicated about the new TEC Soft-close hinge system from Grass, but there IS something revolutionary. The TEC Soft-close face frame hinge has the soft-closing mechanism built right into the hinge cup. It's small, compact, and integrated. Now the only thing missing will be the slamming of your cabinet doors. Closing your doors becomes a new experience, soft – smooth – quiet. TEC Soft-close, made exclusively for face frame cabinetry AND exclusively made in the USA.

**TEC SOFT-CLOSE** – Experience the movement



 **GRASS®**

[www.grassusa.com](http://www.grassusa.com)

# NATIONAL STAGE, INTERNATIONAL CAST



Only the Woodworking Machinery & Supply Expo brings the world's leading players of machinery and supplies to the doorstep of the Canadian woodworking industry.

**October 24-26, 2013**

**International Centre  
Toronto, Ontario**

**VANCE**  
CANADA LLC

#### **Exhibit Sales**

Rich Widick  
(866) 967-2015  
wms@heexpo.com

#### **General Information**

Rich Christianson  
(800) 343-2016  
rchristianson@vancepublishing.com

## **Wood Tech Summit Leadership Conference**

**Wednesday, Oct. 23**

Four Points By Sheraton  
Mississauga (Toronto)

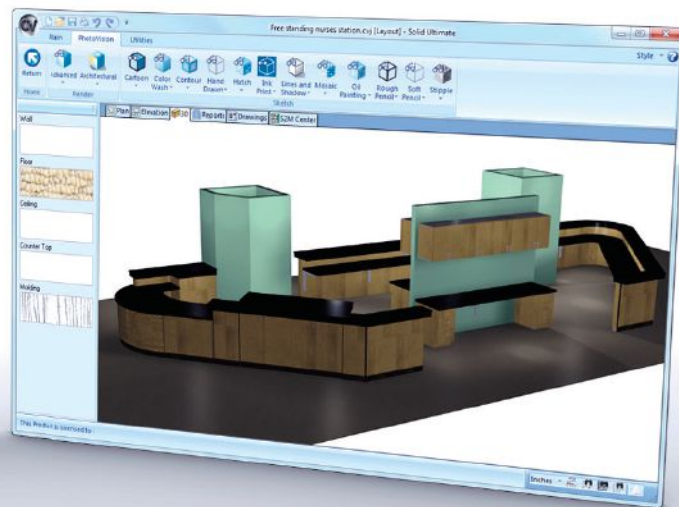
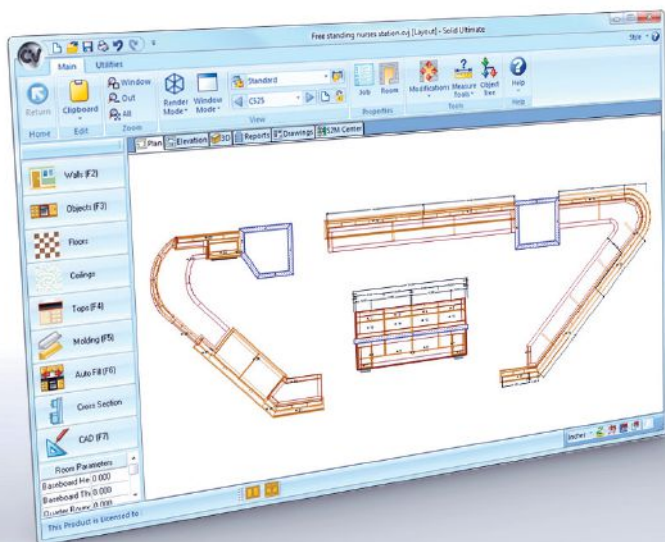
**WoodTechSummit.com**

**Register Now!**  
**WoodworkingExpo.ca**



# Right-sized solutions.

From entry level cutlist packages to fully integrated Screen-to-Machine™ solutions, and every step along the way, we have a software that is right for your business. But unlike other software companies, every product level we offer delivers the core functionalities that cabinet and casegood manufacturers need to get the job done. With Cabinet Vision, you don't need to purchase add-ons or upgrades to automatically generate shop drawings, 3D customer renderings, cutlists, and material requirements, or estimate and price your jobs.



## cabinet vision

### : Design for manufacturing software for woodworkers

Perfect for kitchen cabinets, closets, commercial casework, millwork, bathrooms, office furniture, store fixtures and much more, Cabinet Vision makes the easy jobs simple and the complex ones possible.

- Custom Cabinet & Room Design
- Photo Realistic Renderings
- Material Optimization
- Full Costing Direct from Design
- Cutlists & Bill of Materials
- Designed for ease of use



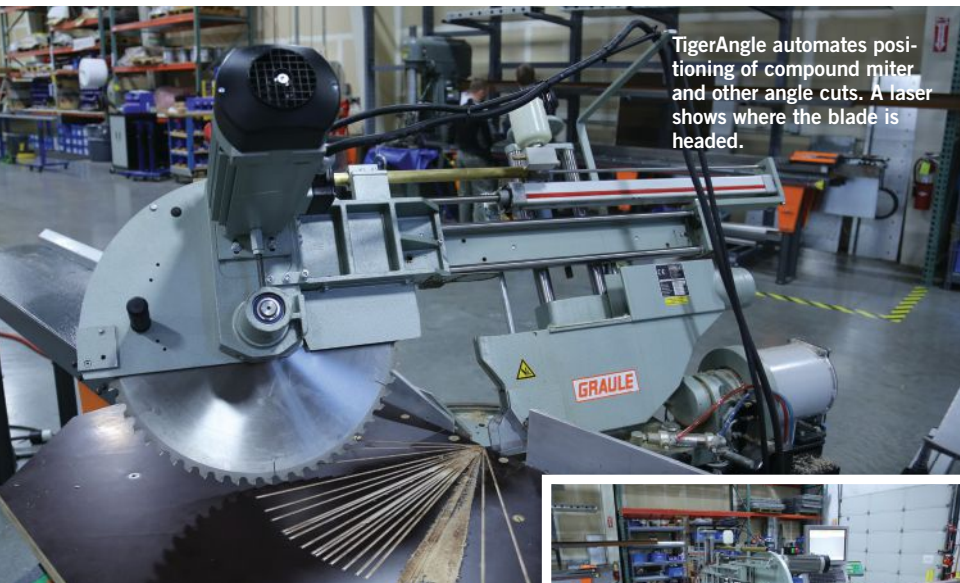
**Download a 30 day free trial**

Visit [essential.cabinetvision.com](http://essential.cabinetvision.com) or call 800-280-6932

# A New Angle on Compound Cutting

By Bill Esler

Calculating cut angles and projecting the blade path with lasers, a high-tech take on compound crosscuts.



TigerAngle automates positioning of compound miter and other angle cuts. A laser shows where the blade is headed.

**Cutting compound angles** in crosscut applications is often trial and error – with an emphasis on error. Woodworkers manually set stops and setting angles, check and re-check, miscut, repeating as needed.

TigerStop's new TigerAngle, shown at AWFS Fair 2013, is intended to trim back setup, test cuts and trial parts. Entered in the Visionary Awards (see p. 35), TigerAngle automates material length positioning and compound mitering, aimed at high volume horizontal and vertical angle cutting operations, such as window and door work, timber processing, framing, palleting, where TigerAngle can speed production 75%, says TigerStop.

Built into TigerAngle are features for safety and material optimization, and TigerStop users will recognize its controls and automated length positioning system, for example, which allows TigerAngle to be used solely as a stop in a set point operation or used as a push feed operation.

The miter saw has been retrofitted with



TigerStop drives to automate miter adjustments. Beamworks Software, developed specifically for TigerAngle, lets the operator create or download cutlists directly to the computer, see visual representations of materials and store repeat jobs. (Beamworks is compatible with other woodworking software programs, too.)

Other features: automated safety hood; material clamping system for accurate positioning for cuts; extended pusher foot for reaching far into the hood on very small precision cuts (prevent operators from reaching in); and a laser guide to show exactly where the blade will cut.

See the TigerAngle run at [WoodworkingNetwork.com/video](http://WoodworkingNetwork.com/video)



## Thermal Tool Mount Device

Leitz Tooling provides a steady flow of new CNC cutting tool technology, along with supporting systems such as the ThermoGrip show here.

Leitz says its ThermoGrip shrink-fit tool-holding system, which uses heat in setting cutting tools, offers precision with its one-piece chuck design, minimizing tool run-out, deflection and balance issues common to collet and hydro tool-holding systems.

The shrink-fit approach heats the tool holder, which expands to accept the cutting tool. The bore in the holder is a bit smaller than the tool shank, and it expands when heated to accept the tool. On cooling, it grips far more strongly than mechanical collets, with thousands of pounds of force.

Heat shrink technology allows for highest-speed machining, while yielding optimized cut quality and significantly extended tool life. ThermoGrip is less expensive than conventional collet chucks, says Leitz.

Leitz's U.S. operations are based in Grand Rapids, MI, where it recently moved its U.S. production facility from Jasper, IN.

Leitz offers apps and immense tooling knowledge base at [leitztooling.com/resources.htm](http://leitztooling.com/resources.htm).





SUPPLYING PROFESSIONAL WOOD



WORKERS & BUILDERS SINCE 1977

Designed and Manufactured by CSH

4 Great CSH Products for you



Rolling Door



Bi-fold Bookcase



Rolling Ladder

**10% OFF YOUR ORDER** (Hardware only)

Mention code **CWB 0113** in order to receive the discount.

Code can be used when ordering on web.

**800-882-0009**

**www.cshardware.com**



# World Class Cherry Award

PSU students fabricate WMIA cherry wooden Globe Award with 5-axis solid block CNC technology.

by Sean Lechowicz

For years, the Woodworking Machinery Industry Association (WMIA) Wooden Globe Awards has honored excellence in woodworking in three categories: Innovator, Educator and Commitment to Excellence Through Technology. The design – a cherry wood globe cut from a solid block – has been the same for a decade. Since 2007, Pittsburg (KS) State University has been WMIA's source for producing it.

PSU's involvement began in 2001 when it won the Educator award. When WMIA was in need of a new partner in 2007 to make the trophy, PSU stepped in.

"We thought, 'We won the thing before,

why don't we make it?'" recalls PSU Professor Doug Hague. Using a C.R. Onsrud 5-axis CNC router, student volunteers program, cut, assemble, sand and finish six Globes. Though the same model is used each year, students are required to render it based on the previous year's Globes.

"They'll have to know how to replicate a design from scratch" when they are employed, notes Hague. "So it requires a little reverse engineering and for the students to look at something, take measurements, and see through a process."

Machine time for each globe is three to four hours. "A lot of that comes from a very

small step-over by the CNC, so that sanding the final product is extremely minimal," says Hague. "A globe from start to finish takes two or three days, a lot of that being heavy on the overhead side, including the making of all the jigs to hold the sphere."

PSU's woodworking degree program is thriving says Hague. "What has kept this program alive is the machinery dealers. They put their machines in our lab, and there are a lot of companies calling each year to hire our graduates."



More Wooden Globe features at [Woodworkingnetwork.com/wood-archives/](http://Woodworkingnetwork.com/wood-archives/)



# ESI

A J.R. Sharp Company

*PVC Edgebanding ...  
It's what we do !*



*9 Inventory Locations*

- *Thousands of Colors / Patterns*
- *On-line Pattern Look-up*
- *.018" to 5mm Thick*
- *12 Stock Sizes*
- *Digital Printing  
Logo or Theme*
- *Fast Custom  
Production*
- *Custom Slitting*
- *Single Rolls*
- *Preglued*
- *Hot Melt Adhesives*



**DÖLKEN**  
**WOODTAPE**  
A SURTECO COMPANY



*American  
Owned*



*Matches to Laminates, Boards & Stains  
Veneer, Metallic & Other Edgebandings Available*

Corporate: 828 West Cienega Ave, San Dimas, California 91773

Ph: 800-470-5831      [www.esi4service.com](http://www.esi4service.com)



# Outwater Bonds with Real Wood

Real wood veneer sheets and real wood veneer edging are offered by this familiar source of trims and surfacing products.

By Wade Vonasek

**Real wood veneer sheets** from Outwater Plastics Industries Inc. may sound like a mis-match. But along with its Architectural Products by Outwater LLC business, the company manufactures and distributes more than 65,000 component products for woodworking businesses – including veneers. Outwater has 300,000-square-foot warehousing and distribution facilities in both New Jersey and Arizona. A free benchmark master catalog includes photos or drawings, schematics, technical information and pricing.

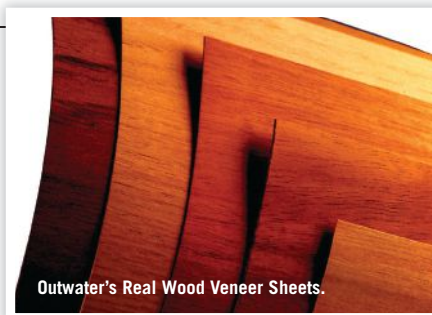
The introduction of its Real Wood Veneer Sheets and Real Wood Veneer Edging complements Outwater's mind-boggling selection of available trims and surfacing products.

The Real Wood Veneer Sheets consist of book matched, sanded and tenderized 1/42-in. thick genuine wood veneers. The veneers are

permanently bonded under heat and pressure to a paper backing, affixing the veneer to the surface to which it has been adhered, and serving as a two-sided barrier. This prevents adhesives from permeating the veneer's surface, and also thwarts surface finishing materials from affecting the adhesive's bonding agent on the veneer sheets in a stack.

Real Wood Veneer Sheets are available in nearly 30 different wood species (e.g., cherry, hickory, maple, red oak, walnut, ash, birch, african mahogany, pecan, sapeli, zebrawood, etc.) in several types of veneer cuts, each imparting various visual effects and characteristics based on the species. Outwater's Real Wood Veneer Sheets are offered both with and without peel and stick adhesive backing in 2-ft. x 8-ft. and 4-ft. x 8-ft. sheets.

Outwater also offers Real Wood Veneer



Edging, in eight species, including cherry, Honduras mahogany, maple, oak, ash and birch. Outwater's Real Wood Veneer Edging is manufactured in both finger-jointed and butt-jointed 250-ft., 500-ft. and 1,000-ft. fine sanded, stainable continuous rolls, and is produced in 7/8-in. fleece backed, 13/16-in. pre-glued and 1/2-in. to 1-1/2-in. peel and stick adhesive-backed varieties in an assortment of wood species. [outwater.com](http://outwater.com)

Wholesale manufacturer of

## CUSTOM CABINETRY COMPONENTS

Outsourcing for small to mid-size cabinetmakers, furniture manufacturers and remodelers

### DOVETAILED DRAWER BOXES

A complete list of options, sizes, and custom features.



### CABINET DOORS

A full array of styles and customizing options, or send us your design.



### DRAWER FRONTS

Drawer fronts to match your doors, custom options available.



### ...AND MORE

Hood panels, archways, moulding, turnings, fluted pilasters, valances...



Call Customer Service today for free product information.

1-800-233-0289  
[www.keystonewood.com](http://www.keystonewood.com)

**KEYSTONE**  
WOOD SPECIALTIES®

Keystone Wood Specialties Inc., PO Box 10127, Lancaster, PA 17605-0127



# LINE BORING MACHINES

TAKING BORING TASK FROM DULL TO PRECISE



## 23 & 13 SPINDLE PNEUMATIC or 13 SPINDLE MANUAL

- 12-inch Throat Opening
- Standard 64-inch Fence and Two Flip Stops
- Additional Fence Extensions & Flip Stops Available Separately



## 23 SPINDLE DEDICATED HORIZONTAL CONSTRUCTION DRILL

- Excellent for Nested Based Manufacturers
- Optional Dedicated Vertical Head for Complete Construction Capabilities.
- Dedicated Head(s) Provide Lifetime Accuracy



## 2-46 DOUBLE ROW LINE BORING MACHINE

- Comes with 132" Fence Capacity & 4 Flip Stops
- Optional "Through Brake" for Chip Free Holes When Through Boring



## "MINI" 13-SPINDLE LINE BORING MACHINE

- Solid Steel Gears
- 3450 RPM for "Clean" Easy Drilling
- Optional Stand & Manual Foot Pedal
- Optional 30" Fence Extensions & Flip Stops
- Industrial Duty Machine for the Serious Cabinet Builder



## ALL MACHINES BUILT IN THE USA WITH:

- TEFC 3,450 RPM Baldor Motors
- Heat Treated Steel Helical Gears

CONQUEST INDUSTRIES ■ 12740 LAKELAND ROAD. ■ SANTA FE SPRINGS, CALIFORNIA 90670

Have a  
**chip, scratch, or screw hole**  
in your countertop  
or cabinet?

### Try our affordable solutions!

SeamFil, FloorFil and ColorFlex caulking can be mixed to match.



**ColorFlex caulking**  
for indoor surfaces,  
such as laminates,  
marble, stone & more

**WoodFil Epoxy**  
for your wood  
surface needs

**FloorFil**  
for laminate flooring



**SeamFil**  
for laminate surfaces



DC Distributing is also your  
one stop reliable source for...



Brackets



Grommets



Edgebanding

**DC Distributing**

(800) 727-0917 Fax: (888) 633-5923

[www.dc-dist.com](http://www.dc-dist.com)





# Automating for Custom Work

CAM software speeds special order work through the CNC at CJS Millwork.

*by Wade Vonasek*

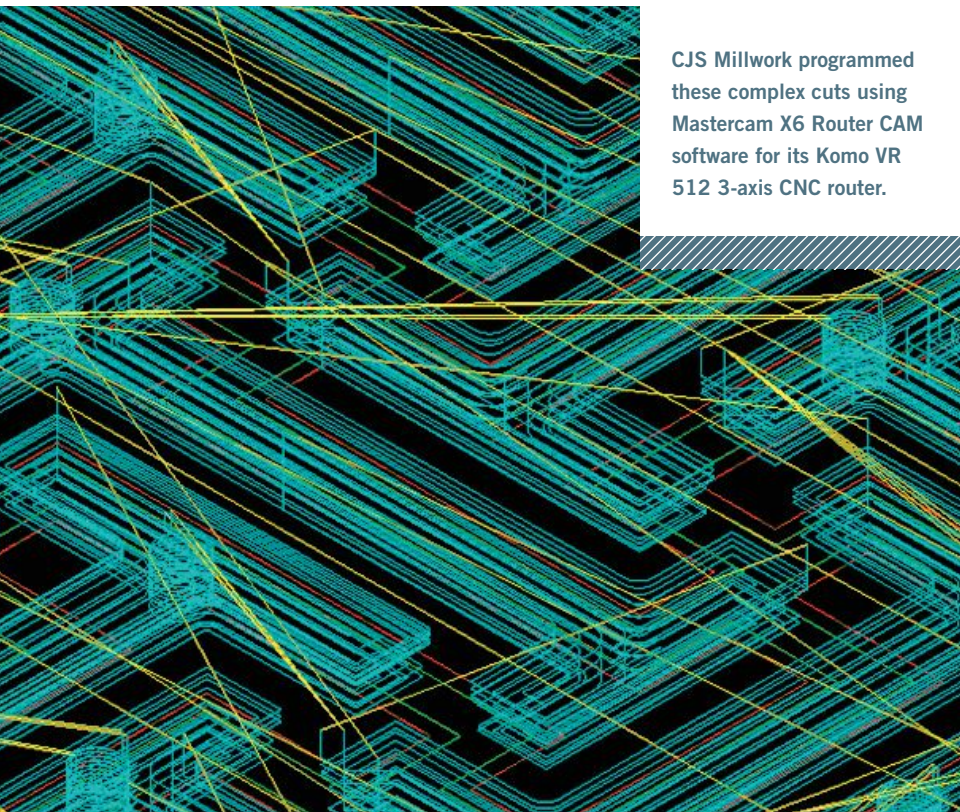
**C**JS Millwork is a large custom millwork shop that prides itself on being able to figure out how to make even the most difficult custom millwork pieces, from smooth radiuses along curved edges to intricate pocketed table tops to lattice work with 3D perspectives. Business has been robust for the Stamford, CT-based company, but robust does not always translate into profitable when it comes

to producing special order millwork.

In 2011, the company began looking for more advanced software for programming its Komo VR 512, 3-axis CNC router in order to reduce the cost and lead times for intricate millwork pieces. CJS was happy with this machine's performance, but was interested in being able to automatically generate more advanced programs, particularly for solid modeling of profiles on

radius parts. In the past, this type of work was done with a shaper, which required creating templates for each radius cut and purchasing an expensive knife to match the profile of the radius moulding. Using the shaper was a cost-effective approach for larger runs, but the time and cost of using the shaper significantly increased lead times and reduced profit margins for smaller quantities.





CJS Millwork programmed these complex cuts using Mastercam X6 Router CAM software for its Komo VR 512 3-axis CNC router.



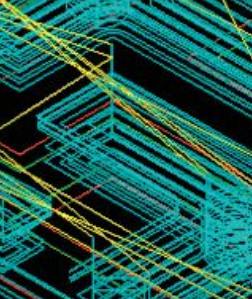
## CJS Cuts Into Hand White Oak

After using Mastercam for several months, an architect asked CJS Millwork to create a rectangular table with an intricate, deep-cut pattern in the tabletop, made from handpicked reclaimed white oak. The design, which was given to CJS as a photograph, called for cutting an extensive pattern of very deep pockets in a 2" deep tabletop.

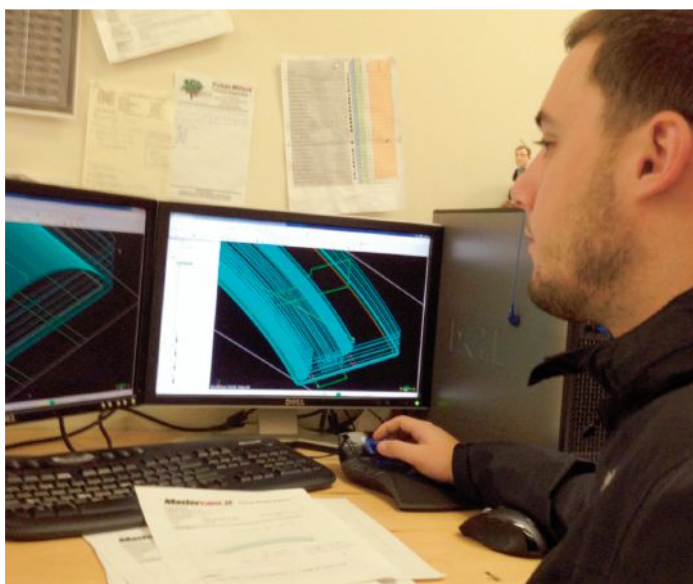
Hard, reclaimed white oak can be very brittle, Scenna says, so there was no room for error. The hard oak pieces that comprised the tabletop panel were glued together carefully so they would lay perfectly flat on the router table. The pattern was drawn in AutoCAD then imported into Mastercam. A ramping feature was used to make the pocket cuts less aggressive to avoid the potential for chipping. The Swept 2D and Ramping were used to create the movements for cutting the radius edges with a fluting bit, and the radius cuts were completed in two passes.

Scenna estimates that creating this tabletop prior to using Mastercam would have taken several days. With the CAM software, it took several hours to program the CNC Router and about two hours to cut the tabletop.

Video shows the reclaimed white oak tabletop design being made: [woodworkingnetwork.com/cwb](http://woodworkingnetwork.com/cwb)



Adding CAM software reduced CJS Millwork's costs and lead times for intricate, custom millwork pieces.



After surveying the marketplace CAM (Computer Aided Manufacturing) software, CJS chose Mastercam X6 Router (from CNC Software Inc.) because its automated Swept 2D toolpath was ideally suited for projecting full profiles along a radius using a small standard cutting tool. Mastercam was also less expensive, because the software is divided into modules that CJS could purchase as needed.

"This blew the whole thing wide open," says programmer Steve Scenna Jr. "First, we didn't have to buy a \$200 or \$300 knife every time we wanted to cut a profile. More important, instead of spending days making templates, we were spending just hours writing programs for our CNC Router."

CJS still uses the shaper for volume work or projects where templates already exist. But now a customer can come in with a

## case study | CJS Millwork

sample of something they want made out of solid oak and CJS can model it in AutoCAD, import it into Mastercam, and match the requested item profitably, even if it's a quantity of one.

### Incremental Improvements

CJS purchased a Maintenance license of Mastercam, which entitled the company to training, free software upgrades, and tech-

nical support from their reseller as needed. Scenna was soon using Mastercam daily, learning more and more things he could use it for. He says the learning process is ongoing and continues to add value to the CAM programming software.

In addition to Swept 2D, Scenna also uses additional programming features such as Backplot, which shows tool movement; Verify, which provides color-coded simula-

## In the Shop

### CNC Router

Komo VR 512, 3-axis CNC router with a 5' x 12' table

### Software

Mastercam X6 Router from CNC Software Inc. featuring Backplot, Verify, Toolpath, Ramping and Swept 2D

### On the Web:

[cjsmillwork.com](http://cjsmillwork.com)



## IT'S EVERYTHING YOU WANT IN A HARDWOOD

Today's consumers want products that are a sound choice environmentally, ethically, as well as aesthetically. The current business climate demands careful attention to the bottom line. Alder gives you the unique ability to satisfy consumer desires with products that will help protect your margins and your balance sheet.



### ABUNDANT & SUSTAINABLE

Northwest Hardwoods PEFC Chain-of-Custody (CoC) certified alder is sourced from forests certified to the Sustainable Forestry Initiative (SFI), the American Tree Farm (ATF) system, the Canadian Standards Association (CSA), and PEFC.



### BEAUTIFUL & UNIQUE

Alder's fine texture, closed grain and uniform color add appeal to virtually any application, plus alder has the unique ability to accept stain and finishes to resemble species like maple and cherry.



### VERSATILE & AFFORDABLE

Alder is a medium density hardwood that has low bending strength, shock resistance and stiffness. It machines well, and is excellent for turning and polishing.

To learn more about alder, visit [BuyAlder.com](http://BuyAlder.com)



Certified to the PEFC Chain-of-Custody Standard



tion of stock removal; Toolpath Ramping, which allows toolpaths to be executed in pre-defined small increments, making it easier to take small passes over fragile materials and reducing the potential for them becoming chipped or nicked; and Toolpath Trimming, which allows him to assign a toolpath to an entire workpiece and then select areas of the part that he wants to "trim" so that the cutter will avoid these areas.

As the year progressed, CJS found more work being performed cost effectively on its CNC router. For example, a radius beaded faceframe that would have been manufactured in several pieces was now made as a single unit in a fraction of the time, as well as a single-piece trellis with a 3D design that gives the illusion of depth. All are drawn in AutoCAD, then modeled and programmed with Mastercam.

### Business Impact

CJS President Christopher Sculti says that the implementation of Mastercam has had a very favorable impact on his business, including reduction of lead times, improved productivity for decorative millwork, and increased utilization of the company's CNC router. In addition, CJS is using advanced programming features of Mastercam to create pieces that require less sanding and other finishing operations after they are produced. These improvements, in many cases, have translated into more competitive pricing, which in turn has led to the acquisition of additional business.

See a CJS Millwork photo slideshow at [woodworkingnetwork.com/cwb](http://woodworkingnetwork.com/cwb)





## "I CHOOSE MUTUAL INSURANCE BECAUSE I KNOW WE'RE IN THIS TOGETHER."

Business owners who work with a mutual insurance company have a shared purpose, getting the best coverage and protection available. And mutual insurance delivers because mutuals serve policyholders, not shareholders. Our decisions are always based on what's best for you and your business. Plus local brokers offer customized solutions for all your business insurance needs. Find out how mutual insurance can work for you.



**PENNSYLVANIA LUMBERMENS MUTUAL**  
INSURANCE COMPANY

800.752.1895 | [www.plmins.com](http://www.plmins.com)

Member of the National Association  
of Mutual Insurance Companies

"SHARED PURPOSE. MUTUAL VALUES"™ is a registered trademark of the National Association of Mutual Insurance Companies. All rights reserved. © 2012 National Association of Mutual Insurance Companies.

SHARED PURPOSE. **MUTUAL VALUES.**™



## **GROW YOUR BUSINESS – With NO Capital Outlay or Additional Workforce**

- ▶ Strengthen your **PROFITS**
- ▶ Expand your **PRODUCTIVITY**
- ▶ Lower your **COSTS**
- ▶ **MINIMIZE** your waste

### **OUTSOURCE YOUR CABINET & CLOSET PRODUCTION**

CabParts manufactures Cabinet Boxes, Drawer Boxes, Closet Components and more. All high quality components are manufactured to your exact requirements, materials, configurations and sizing. Plus, they are easily assembled with Conformat screws or Dowel and Glue joinery, passing AWI Custom Grade. Exceptional customer service since 1987.



**CabParts, Inc.®**

970.241.7682

To learn more or to download a free catalog

[www.cabparts.com](http://www.cabparts.com)



**RESIDENTIAL • COMMERCIAL + CLOSETS**

**BARTH by  
MARTIN**

RP 3001 multi press



**Cabinet, Frame & Panel-  
Press in „ONE“**

VMP vakuum press



LP: \$ 12.760  
**Now: \$ 11.495**  
**SAVE: \$ 1.265**

Vakuu car XL



LP: \$ 8.470  
**Now: \$ 7.495**  
**SAVE: \$ 975**

Vakuu syst



**\$ 1.690**  
**Save 10%**

**MARTIN**

MARTIN Woodworking Machines Corp.,  
8715 Sidney Circle, Ste. 100, Charlotte, NC 28269,  
Fax (704) 921-0361, [www.martin-usa.com](http://www.martin-usa.com)  
Visit our webshop!

Contact us : Phone (704) 921-0360 • [info@martin-usa.com](mailto:info@martin-usa.com) • visit our website for more information

# It just keeps getting better

**AWD is your Added  
Value Reseller for Cabinotch®**

- Complete Wood & RTF Door Selection
- Drawer Boxes
- Reface Components
- Hardware

**Order Online**



**479.968.5486**

[order@arkansaswooddoors.com](mailto:order@arkansaswooddoors.com)  
[www.arkansaswooddoors.com](http://www.arkansaswooddoors.com)

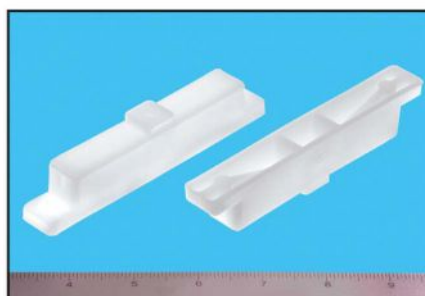


**Bainbridge Manufacturing, Inc.**  
Plastic Hardware for Cabinets, Closets and Furniture  
Cabinet Master® Plastic Hardware

2013-10

**AT BAINBRIDGE, WE MAKE  
PLASTIC HARDWARE!**

**FALSE FRONT CLIPS**



**Over 500 items • Buy online at  
[www.Bainbridgemfg.com](http://www.Bainbridgemfg.com)**

**ACTUAL PEOPLE ANSWER OUR PHONES !!**



Delivering Excellent Customer Service Since 1960  
237 W. 3rd Street • P.O. Box 487 • Waterville, WA 98558  
(509) 745-9555 • 1-800-255-4702 • Fax (509) 745-9666



# Depth Setter Avoids Overdrive

By Bill Esler



**The effort to set screw depths** to avoid over- or under-drilling has given rise to numerous approaches – from wrapping the drill bit in masking tape to a wide variety of gadgets and devices.

So we shouldn't have been surprised, when we posted this screw depth setting tool description online, that we got a lot of response and page views. Even though it is intended for decking, woodworkers were quick to see applications in other areas as well.

This Smart-Bit Deck Screw Depth Setter was developed by Starborn Industries, a manufacturer and distributor of fastening products. How does it work?

The Smart-Bit Depth Setter features an auto-stop mechanism that automatically disengages the driver bit and stops the screw from driving further once the desired depth is reached. And it manages to do this without stripping the screw recess.

The tool also features a free spinning stop collar and rubber O-ring to protect the work surface from damage and marking. Further,

Starborn Industries' new tool puts the kibosh to over- and under-drilled screws without damaging surfaces or stripping the screw recess.

the Smart-Bit Depth Setter can be adjusted for use with many different screw types and applications. Once the screw depth is set on the tool and locked in place, the Smart-Bit Depth Setter produces consistent results throughout an installation.

Starborn says that this new, adjustable tool will work equally well with its own brand of fasteners or with brands of fastening products, and is ideal for ensuring screws are set to the desired depth below the work surface in applications such as decking, drywall and general building.

The Smart-Bit Depth Setter works with both Phillips and Torx bits. Each Smart-Bit comes complete with one T-20 bit in the tool, as well as four additional replacement bits: two T-20 bits, one T-25 and one #2 PH. [starbornindustries.com](http://starbornindustries.com)



More views and video of this tool at [WoodworkingNetwork.com/cwb](http://WoodworkingNetwork.com/cwb)



## Pocket Hole Jig Gets a Makeover Tool

Kreg Tool says its new Kreg Jig K5 pocket hole jig features a clamping mechanism that has a front-mounted handle and adjusts to different workpiece thicknesses without tools or adjusting nuts. Adjusting for different thicknesses is done, instead, by sliding the clamping mechanism into position, lifting a front-mounted handle, then pushing it back down. This sets the spring-loaded clamp to hold tight. Reset is done by following the same steps. Rubber padding on the clamp face prevents workpiece marring.

The new K5 jig also has a quick-release drill guide block, as well as a new setting block for the drill bit stop collar. A standard 3-hole drill guide block is included, and the Jig K5 is compatible with Kreg's Micro Pocket Drill Guide and Kreg Jig HD.

A pair of extension wings supports wide or long workpieces – and can store drill and driver bits, screws, etc. An adjustable workpiece stop, a swiveling dust-collection port, and hex-shank drill and driver bits are also included. Kreg prices the K5 at \$139.99. It ships Sept. 1. [www.kreg-tool.com](http://www.kreg-tool.com)

Watch it run in Suppliers Videos at [WoodworkingNetwork.com/videos](http://WoodworkingNetwork.com/videos)

# Speed, Distance Spray Gun Technique

The distance the spray gun tip, as well as the speed that the gun is moved over the surface, is important in achieving the best finish possible.

*By Bernie Bottens*



In spray coating, speed and distance are your friends when it comes to getting the best finish. The distance the spray gun tip is from the object being sprayed is important, as is the speed the gun is moved over the surface.

Speed controls the amount of coating that is applied per pass to the surface. The faster the spray tip travels over the object, the less you apply. This can be important if you are applying a coating of very low viscosity. Going too slowly will create runs. Not moving across the surface at a consistent speed means that the coating will not be applied evenly.

The distance the tip is above the surface also affects the amount of coating applied. The farther away from the surface, the bigger

the fan pattern is and the more disbursed the coating will land. But not being able to maintain a consistent distance will apply the coating unevenly.

Discipline yourself to find and maintain the "sweet spots" of distance and a constant speed. A lot of people use their forearm incorrectly when spraying, most of the time using their wrist (forearm rotation) at the beginning and end of a pass to make up for not using their arm and body to keep the gun moving precisely. The end result is less coating on the leading and trailing edge of an object and more in the middle.

Always keep the fan pointed perfectly perpendicular to the surface, but never wave the

Wagner AirCoat



spray fan by rotating your forearm. Use your wrist only to keep the fan pattern perpendicular to the line of travel all the way through the pass. That is essential to consistent millage on the surface. **More Bernie at [woodworking-network.com/wood-blogs/bernie-bottens](http://woodworking-network.com/wood-blogs/bernie-bottens).**

# DRAWERS

& accessories

Cutting Board Inserts  
Curve Front Drawers  
Waste Bin Pullouts  
Cabinet Pullouts  
Lazy Susan Kits  
Cutlery Inserts  
Spice Inserts  
and more...

Corner Cabinet Kit with Drawers

CUSTOM

Marine-grade drawers

**Gingrich**  
Woodcraft, Inc.

Fax (807)486 0351    1-877-DOV-TAIL  
drawers@gingrichwood.net

## VACUUM PRESSING SYSTEMS, INC.

### VENEERING AND LAMINATING WITH VACUUM

**VacuPress®**, the leader in vacuum technology for woodworking offers a complete line of innovative products for veneering, laminating and clamping with vacuum.

- Auto self cycling electric and air driven vacuum pumps
- FlipTop frame table presses
- Full line of panel and laminating bags in vinyl and polyurethane
- Veneering glue and accessories

Products and information online at [www.vacupress.com](http://www.vacupress.com)

The number one choice of woodworkers everywhere.

553 River Road, Brunswick, Maine 04011 • 800-382-4109 • Fax 207-725-0932



# New Pilasters



Narrow  
Revival  
Pilaster



Acanthus Leaf  
Decorative  
Pilaster



Mission Style  
Decorative  
Pilaster



Revival  
Pilaster

Osborne Wood Products introduces four new pilasters that can transform your cabinet project from ordinary to extraordinary. Whether your style is simple, clean, ornate or fluted, we have a beautifully detailed pilaster that will reflect your good taste.

Call or click for more information on our new pilasters, and to see the wide assortment of wood species.

Expand your design concept and become refreshed.



Order by phone at  
800.481.2307

Or visit  
[www.osborneproducts.com](http://www.osborneproducts.com)

Request a free catalog via phone or on our website.



A TRADITION OF INNOVATION™

Oliver's 120 year heritage of innovative design and quality goes into every product we sell.

Oliver offers a full line of heavy-duty machinery.

Two-year limited warranty.

Visit Oliver Machinery's  
NEW customer forum online at  
[www.olivermachinery.boards.net](http://www.olivermachinery.boards.net)

## FOR ALL YOUR EQUIPMENT NEEDS!



END MATCHING  
MACHINE



DUST COLLECTION



CONTOUR EDGE  
BANDING



BAND RESAWS




LINE BORING  
MACHINES



SLIDING TABLE  
SAW

[WWW.OLIVERMACHINERY.NET](http://WWW.OLIVERMACHINERY.NET) | [INFO@OLIVERMACHINERY.NET](mailto:INFO@OLIVERMACHINERY.NET) | 800-559-5065

 OLIVERMACHINERY

 [FACEBOOK.COM/OLIVERMACHINERY](https://FACEBOOK.COM/OLIVERMACHINERY)

 [YOUTUBE.COM/OLIVERMACHINERY](https://YOUTUBE.COM/OLIVERMACHINERY)

# It Beats a Pencil Nifty Tool To Scribe

When scribing, the shortcomings of your pencil are resolved with this accurate and adjustable helper.

*By Jared Patchin, J Alexander  
Fine Woodworking, Boise, ID*

Scribing is one of those tasks that can be done many different ways. My scribing tool of choice has always been a pencil in my hand. But pencils have shortcomings. It often leaves a mark on the wall or ceiling as you drag it along.

Pencils also have a one size fits all scribe depth. There is no adjustability, unless you tip or angle the pencil, which is anything but accurate. Lastly, pencils fail in the scribe mark itself. If the lead is dull, you are left with a thick, fat groove pressed into your workpiece. If the lead is nice and sharp, chances are it will break when pressed against the surface.

The Thingamejig solves all of these issues. A non-marring plastic pad connects to the circular plate to prevent marring finished surfaces

while scribing. The scribing height is minutely adjustable from 0" to 1.5", and can be locked in place to ensure it does not shift.

Lastly, the scoring blades are razor sharp, so very little pressure is needed to create a nice clean scoring line on the surface. After using the Thingamejig on a few jobs, I found an added benefit: on darker woods or a stained finish, pencil lead can be impossible to make out, while a scored line is crisp and clean, easy to see the boundary line while planing.

Sometimes I am too lazy to dig out the Thingamejig, and use the pencil instead. Then I kick myself for the sub-par results. [woodworkingnet-work.com/wood-blogs/jared-patchin](http://woodworkingnet-work.com/wood-blogs/jared-patchin).



# impression.

Linear texture. Organic feel. Modern appeal.  
It's our new line of textured melamine and thermofoil components in 5 pleasing colors.  
Quality products. Affordable pricing.  
Responsive service.

It's what Northern Contours can do for you.



Contact us today.  
866-344-8132  
[www.northerncontours.com](http://www.northerncontours.com)

Fisherman's Wharf, Oyster Bay, Outer Banks, Malibu, and Kona with a variety of edgebanding options on our Level profile are shown right.



## SOLID WOOD COMPONENTS

Stock Items \* No Minimum

Ask Us About Custom Work



A0757



A0751



A0541



A0113  
WITH A0208



A0556



A0929



**Adams**  
Wood Products, Inc.™

[www.adamswoodproducts.com](http://www.adamswoodproducts.com)

Phone: 423 - 587 - 2942 Fax: 423 - 568 - 2188

Email: [info@adamswoodproducts.com](mailto:info@adamswoodproducts.com)

Dept. CW50



A0920

## Your finest cigars deserve the finest drawer

The CCF Humidrawer™ is made with the aficionado in mind, this attractive drawer is lined with Spanish Cedar, and can be manufactured in your choice of one of our many fine wood selections. Featuring a laser engraved customized wooden lid and optional separate compartments to store cutters, lighters and ashtray.



4716 Rt. 66 Apollo, PA 15613

phone: 724.727.2045 fax: 724.727.3015

[www.ccfdrawers.com](http://www.ccfdrawers.com)

800-581-3683



## Dust Collection for Every Shop!

7.5hp  
Direct Drive

**The Oneida Industrial Series.**  
Built to last a lifetime.



- ▶ 1.5 - 20hp Systems and Components
- ▶ GE® HEPA (Certified H-12) Filter media (See specs on website.) Included most systems.
- ▶ Filter Flame Guard Protection. Included most systems.
- ▶ Design Consultation Available.



  
Made in the USA

Ask about our Air Locks.

## 2 & 3hp Portable Gorilla®



- ▶ Highly portable, rolls anywhere.
- ▶ Requires no ductwork. Uses flexhose instead.
- ▶ GE® HEPA (certified H-12) filter media.
- ▶ Remote starter and pat. pend. Dust Sentry™ bin level indicator included.

## Ductwork



- ▶ Free shipping on ductwork orders of \$300+ / 48 states / Some restrictions apply.

Nordfab® Quick Fit® Ductwork Available

Like



Dust Collection Systems and Components Since 1993.

Call Today for **FREE** Catalog!

**1.800.732.4065**

[www.oneida-air.com](http://www.oneida-air.com)



# Help Finding Workers and Jobs

Employers connect with candidates, and vice versa, at Woodworking Network's new career center on the Job Board.

*By Sean Lechowicz,  
Editorial Assistant*

**Situations Wanted and Job Postings** are easy to find at Woodworking Network's new career center – the Job Board, launched in partnership with JobTarget, an industry job board development and management firm. (JobTarget powers more than 1,100 job websites and career centers for organizations that serve targeted business segments.)

At the site August 6, a cabinetmaker apprentice was sought by RC Smith Casework Co., in Minneapolis; cabinetmakers are sought at Bearwood Concepts in Tulsa; and a carpenter opening is listed for UC Berkeley.

The Woodworking Network Job Board career center focuses on connecting employers in the wood manu-

facturing and custom woodworking fields with eligible qualified candidates. By using the recruitment service, employers are given access to Woodworking Network's readership, so a job posting will reach a large number of highly skilled passive and active job seekers.

The career center includes pre-screen filters, the option to include a company profile and logo with a posting, and a pay-per-use resume bank. Woodworking Network's membership can find a unique opportunity to connect with employers and recruiters posting jobs specific to their woodworking skills. Candidates can post resumes anonymously, search through job postings and set up personal job alerts. More at: [jobs.woodworkingnetwork.com/home](http://jobs.woodworkingnetwork.com/home)



Home of the **GREEN VACUUM CUPS**

Better Vacuum Cups, Inc. provides top notch vacuum cups for all CNC Routers. Route into your cups, no problem! Check out the videos online at [GreenBVC.com](http://GreenBVC.com)

**909.606.0140**  
or toll free  
**877.872.2821**

**BETTER VACUUM CUPS INC.**

**THE ORIGINAL**  
**LOW ANGLE POCKET MACHINES**

Made in the USA since 1985

800.282.8338 [www.CASTLEusa.com](http://www.CASTLEusa.com)

TSM SERIES POCKET CUTTERS FOR PROFESSIONAL WOODWORKERS

**THE ULTIMATE POCKET**





**THE PRIDE OF  
A MASTERPIECE!**

Your Signature, WalzCraft Quality Components

Custom Cabinet Doors

Drawer Boxes

Wood Moldings

Accent Components

Cabinet Accessories

Face Frames

Wainscoting

And More

**WalzCraft**

WalzCraft.com 800-237-1326

Ad V-B

## Have It Your Way! **EDGEbanding**

— One Roll Minimum —

**Automatic • Peel & Stick • Pre-Glued • Iron On**

### PVC

#### Edgebanding

1700 Color Matches in Stock .018  
Thick 1-2-3 mm • Metallic's

### EeeZeeEdge

#### Peel & Stick

"A Simple Solution that Really Sticks"  
1700 Color Matches  
30 Plus Veneer Species

### AirBanding

#### Pre-Glued PVC

For Hot Air Edgebanders  
1700 Color Matches

### Wood Veneer

#### Edgebanding

Over 30 Species • All widths  
Pre-Finished  
Custom Stained & Pre-Finished  
Thick Wood 1-2-3mm

### Veneer Sheets

10mil - 20mil - 2Ply and Phenolic Backers

### Glue for Edgebanders

Cartridges and Pellets

### Custom Services

\*Stained & Pre-Finished: One Roll Minimum  
\*ABS: Green Custom Matched Production Runs  
\*PVC: Custom Matched Production Runs  
\*Slitting: Custom Widths From Master Rolls  
\*Wood Grain Embossing: One Roll Minimum  
\*Hot Melt Coating: One Roll Minimum



**EdgeCo**

America's #1 Source for Edgebanding

1-800-644-6449 1-800-488-5441

1-888-EDGE01

www.edgecoinc.com

**EZ-Rod  
Grippers**



DECORATIVE MOUNTING HARDWARE  
**FROM BUILD  
to FINISHES**

NEW WEBSITE & TOOLS!

standoffsystems.com/woodworking

DESIGN SUPPORT

775.829.7272

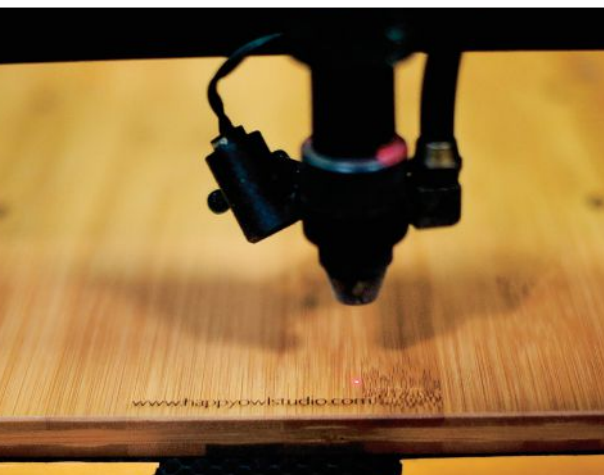
info@standoffsystems.com

**STAND  
OFF  
SYSTEMS**





As retailers move to iPads for cash registers, they encounter the challenge of connecting a cash box to it. Happy Owl Studio offers a warm customized wood solution.



## Custom Digital Wood Crafters

Happy Owl Studio handles batch custom wood manufacturing in leased space.

*By Michaelle Bradford & Bill Esler*

■ Pad cash registers are popping up all over, allowing small shop owners to use the latest technology in creative wood frames to ring up sales. Custom wood products firm Happy Owl Studio is cashing in on the developing niche, making next-generation wood registers.

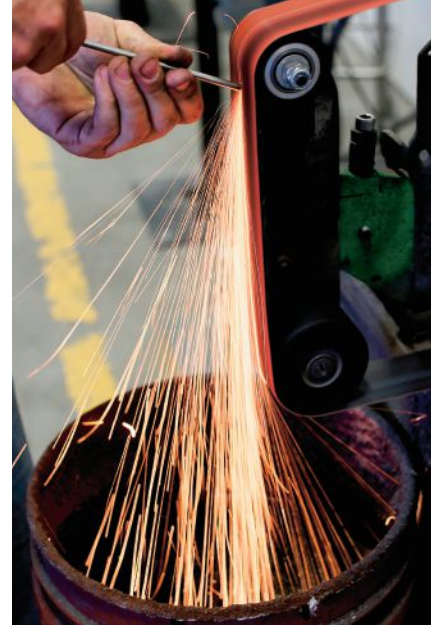
While the iPad can easily handle online sales and credit cards, for printing paper receipts and for customers paying with cash, a tradition-

al register box is needed.

The team at San Diego-based Happy Owl, self-described “Apple devotees,” found a way to integrate iPad-controlled electronics with electro-mechanic hardware, and launched the “cash register of the future” in 2012. The Cashbox, as it is called, is an all-in-one iPad point of sale system featuring a wooden box handcrafted from Cali Bamboo plywood and finished in several







styles: Flat Grain Amber, Natural or Marble Woven.

The innovative design of the Cashbox includes an arch system that gracefully tilts the iPad from the cashier ringing up the sale, to the customer for a digital signature – done with a fingertip. The wood frame that wraps the iPad and connects to the arch stabilizes and extends the credit card reader enhancing the security of the iPad and increasing the reliability of card-swiping. It integrates a cash drawer that opens with a single tap on the iPad, a receipt printer with paperless options, and an Apple keyboard. Chief Design Officer Ryan Jordan takes pride in concealing any wiring through careful craftsmanship and design.

Each box is available with custom laser engraving. The production equipment Happy Owl Studio uses – a CNC, laser engraver, saws, planers, sanders, jointers and the like – are included in a rent-by-the-hour manufacturing space, part of the Makerplace, a 14,000-square-foot public



access workshop in San Diego.

Within Makerplace is a full production wood shop, metal shop, flatbed laser engravers, California approved paint booth, 3D printers, CNC router, CNC mills, CNC plasma torch, a wood lathe, a metal lathe, a TIG/MIG welding lab, and electronics lab.

In April, Happy Owl Studio released an updated version of its Cashbox, re-engineered to accommodate a wider range of credit card systems.

“When we first began designing the Cashbox, we were working primarily with Square’s card reader in mind,” says Jordan, who along with Devon Read and Nathan Havey co-founded the company.

“Once we hit the market, we started to quickly realize just how many retailers were looking for more features.” These required more access to power, and hiding the cables was a key part of the Cashbox aesthetic. “So we went back to the drawing board and came up with a system that allows us to accommodate any reader.” The tilting action is smoother and more reliable, and, “It’s even more compact and svelte than our first design,” Jordan says.

“We have done a couple different versions in different woods,” he says. “We built one for a donut shop in Abu Dhabi, all whitewash wood to match their flooring.

“I’ve done a couple in walnut. We just glue it up and plane it down like a normal project.” For a farm with a retail shop, “We built one of redwood.” The Cashbox was

## feature | happy owl studio

given a distressed finish through sandblasting. "Most of our work is custom," Jordan says. "Almost all of it comes out of a conversation with an owner."

Clients customize their Cashbox with logos, emblazoned using a 100 Watt Category 5 Katrina by Hurricane Laser, with a 60" X 48" work table. "It does a fantastic job engraving or cutting everything we throw at it," Jordan says. A 4' X 8' Viccam CNC

router does cuts for each project.

Because they rent space, jobs are ganged together, with a minimum two orders initiating production. "We're constantly in production at some stage." The success of the Cashbox has also lead to conventional woodworking jobs.

"The woodshop side of our business has done really well," Jordan notes, with requests coming in for walnut display boxes

### At Makerplace

#### CNC Router/ Laser Cutter

Viccam VS 4x8-ft. flat bed 2-axis  
Hurricane 80 Watt, 100 Watt

#### Application Software

VicEngrave, VcarvePro

#### Laser Cutter

planer, jointer, sanders (belt, drum, oscillating) router table, mortising machine, pocket hole jig

CAD/CAM

### We Asked The Mastercam Community...



#### Why do you use Mastercam?



Best tool in the toolbox.

Like • Reply • 12:20pm via mobile



**David Cubbege** MASTERCAM, it makes the once thought impossible, possible. I use X7 every day in the aerospace industry, making helicopter parts.

Like • Reply • 1:59pm via mobile



**Tony DeGillo** Mastercam is the most powerful tool in our shop! I use it every day and cannot say enough good things about it. We just received our X7 in the mail and will be updating the software this weekend. Thanks for making a great product!!

Like • Reply • 2:12pm via mobile



**David Greg Fetrow** Mastercam is a time saver that allows for working smarter, not harder.

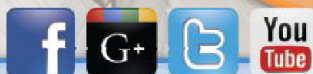
Like • Reply • 4:21pm via mobile



**Ryan 'Boulder' Richford** I'm a student at a vocational school and we use Mastercam almost everyday. It's great to be learning something that is more or less mandatory in modern manufacturing.

Like • Reply • 5:14pm via mobile

[View more comments](#)



Mastercam is the most widely used CAD/CAM software in the world with an unmatched global community to back it up.

Join us to find out how the #MastercamFamily can benefit you.



# Mastercam®

671 Old Post Rd.  
Tolland, CT USA  
800 228 2877

[www.mastercam.com](http://www.mastercam.com)

for high-end headphones, prototypes and concepts, even signage. "We've been getting all these jobs for people." A self-taught woodworker, Jordan has taken naturally to the business. "Since we have been building the Cashbox, my skillset has really expanded," he says, and is developing furniture concepts and other new lines, including an adaptation of the Cashbox for a mall kiosk.

Jordan and his colleagues are quick studies, and all have a technical bent. "With our technical side of being able to pull electricity through a table without a power strip, the customizability of the Cashbox is right on the line between function and art," Jordan says.

#### Made in America

Happy Owl Studio also is riding on the trend to domestic manufacture. Jordan says he and his colleagues began making fabric and leather cases for Apple products, producing those goods in China.

"When the credit card iPad revolution came, we wanted to be out in front of it," Jordan says. "We were initially thinking we would have to make these things in China, and we were burned out on China. 'It's wood,' we thought. 'We could build that.'"

Working with a production cabinet shop to have access to a router, "We were starting to run out of money. Then we found Makerplace. It allows us to have a big shop with virtually no overhead, and a production team in the city we grew up in using our friends."

Video shows Happy Owl Studio in production at [woodworkingnetwork.com/cwb](http://woodworkingnetwork.com/cwb)





# DOVETAIL DRAWERS



Are your lead times sending customers to your competition? We can help.

By outsourcing your drawer boxes to us, you get a consistent, quality box at a competitive price in seven working days or less. Top edge and side thickness options are at no extra cost.

Call 800-643-1158 to request a free sample drawer and price quote.

#### SIDE THICKNESS



1/2" 5/8" 3/4"

#### TOP EDGE PROFILE



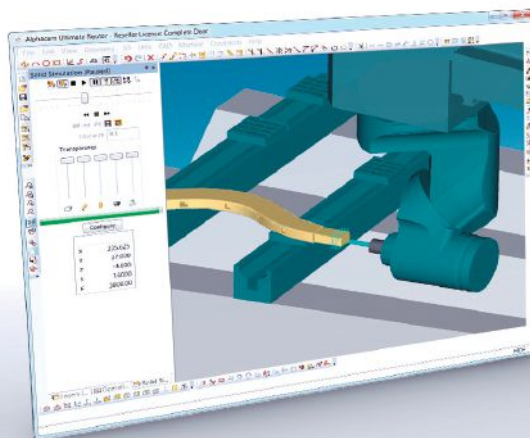
Radius Flat Square

**WITMER**  
WOOD PRODUCTS LLC



Fax 920-361-3287 • witmer@pcfreemail.com  
540 N. Industrial Park Road, Berlin, WI 54923

# Powerful. Flexible. Simple.



## alphacam

: Simple yet powerful  
CAD/CAM software for wood

From simple routed parts to complex, 5-axis furniture components, Alphacam can make your CNC router perform better than you thought possible.

- Advanced Routing
- 2-5 Axis Machining
- Full Machine Simulation
- Powerful Nesting
- Reusable Machining Styles
- 3D Carvings with Alphacam Art

Learn more at [www.alphacam.com](http://www.alphacam.com)  
or call 800-461-2015

## Lignomat Moisture Meters

A trusted name in  
the industry.

### Pin and Pinless

- ▶ Reliable and accurate
- ▶ at a good price with
- ▶ a 2-year warranty.



The ideal pinless meter for flooring applications:

- dual-depth Ligno-Scanner SDM 1/4" and 3/4" with calibrations for
- ♦ different wood species ♦ different types of bamboo
  - ♦ concrete and drywall plus
  - ♦ 3 sensitivity scales for different building materials.



[www.lignomat.com](http://www.lignomat.com)

800-227-2105

[www.wood-moisture.com](http://www.wood-moisture.com)

Email: [sales@lignomat.com](mailto:sales@lignomat.com) 503-257-8957 Portland, OR

Shaping your world.

**vero**  
Software

# How To Fix Power Tools

Repairing power tools on your own, rather than sending them to repair centers, can save money, and deliver faster turnaround.

by Bill Esler

**Portable power tool repairs** can be pricey. “Taking power tools to a repair center is almost as expensive as buying a new tool, and sending them to the manufacturer can take weeks,” says David Fairbanks, CEO of **eReplacementParts.com**. “Repairing them yourself is the most affordable option.”

But repairing it yourself can be daunting. Fairbanks offers some tips on common breakdowns that are relatively easy to fix.

“The hardest part of a repair is diagnosing the problem,” Fairbanks says. “Once you know what’s wrong, you can order the appropriate part and follow online repair tutorials.”

When diagnosing a tool for repair, think of it as a group of systems. Most tools will consist

of an electrical system and one or more mechanical systems. Most electrical problems can be solved by doing a few tests with a multimeter. “By taking a few voltage and continuity tests, you can isolate the faulty part,” says Fairbanks. “When looking at the various mechanical systems, look for signs of wear, bearing condition and proper lubrication. Also look for damage such as cracked castings or bent parts.”

A planer, for example, “has a basic electrical system consisting of incoming power, a switch and a motor. Your planer will also have a few different mechanical systems such as the feed rollers, a cutter head and a table raising sys-

tem. Isolate in which of the systems the problem exists.” Among the most common parts needing replacement on woodworking power tools are switches, power cords and motor brushes. **More at [woodworkingnetwork.com/cwb](http://woodworkingnetwork.com/cwb)**



## BiesseEdge Roxyl

### Gives You A Competitive Edge

Flexible edgebander guaranteed to give you a perfect finish on every panel. Equipped with standard features not normally found on machines in this price range, the Roxyl is the affordable, high production solution. Innovative, ergonomic design combined with increased productivity and flexibility.

For more information, contact Jason Varelli at 704.307.6416 or email [jason.varelli@biesseamerica.com](mailto:jason.varelli@biesseamerica.com).

Watch the video  
[www.youtube.com/biesseamerica](http://www.youtube.com/biesseamerica)



For a showroom demo call  
**1.877.824.3773**



**BIESSE**

877.8.BIESSE (877.824.3773) | [sales@biesseamerica.com](mailto:sales@biesseamerica.com) | [biesseamerica.com](http://biesseamerica.com)

## MARTINCRAFT WOOD PRODUCTS LLP

### Custom Dovetail Drawers

*Including . . .*

- ◆ Spice Racks ◆ Trash Bins
- ◆ Cutlery Drawers *and more!*

N12776 State Rd. 73  
Owen, WI 54460

**Phone (715) 229-4080**

**Fax (715) 229-4049**

Lead Time 3-7 Business Days (or less)

**Call for a free sample drawer!**

**NEW!**  
**Undermount**  
**Spice Rack**





## Efficiently Join Wood At Any Angle

with the Hoffmann  
Dovetail Joining System



The Hoffmann Dovetail Joining System is a unique way of efficiently joining wood and wood related materials like MDF, plywood, particle board, etc. From mitered cabinet doors to store fixtures, from window trim to jewelry boxes, picture frames to furniture, interior millwork to outdoor decks - Hoffmann has the right "key" for the joint.



MU2-P  
Pneumatic  
Benchtop  
Routing  
Machine

PU2  
Pneumatic  
Free-  
Standing  
Routing  
Machine



- Eliminate offset corners and costly repair work.
- Join all angles from 0° - 180°, including butt joints & compound miters.
- No screws, nails, staples or clamps saving time & labor by up to 70%.

Please check our website for pricing and lease options.

# HOFFMANN

Hoffmann Machine Co., Inc.  
Toll-free: (866) 248-0100  
<http://www.Hoffmann-USA.com>



Create the ultimate workshop with our affordable American made woodworking machines. These tools will revolutionize the way you process panels while delivering the quality and results your reputation depends on.

## CUT · ROUT · SAND · EDGE



Wide Belt  
Sanders



Panel Saws



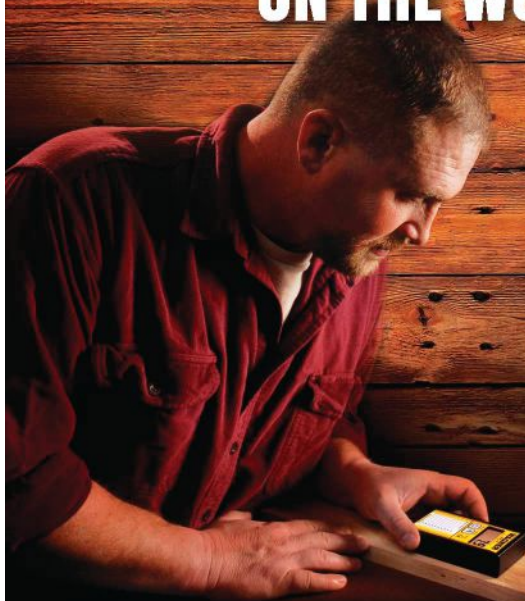
Saw/Router  
Combos



Edgebanders

(800) 772-2327  
[www.safetyspeed.com](http://www.safetyspeed.com)

## Measure Moisture IN THE WOOD NOT ON THE WOOD



Fast + Accurate!



Deep Readings,  
No pins!



Proudly Manufactured  
& Supported in the USA



**WAGNER  
METERS**  
The Moisture Measurement Leader

800-505-1283

[www.wagnermeters.com](http://www.wagnermeters.com)





# **SAVE** the **DATE**

## **2014 CABINETS & CLOSETS CONFERENCE & EXPO**

**April 9-11, 2014**

**Garden State Convention Center • Somerset, NJ**

**[CabinetsandClosetsExpo.com](http://CabinetsandClosetsExpo.com)**

**VANCE**



## Product Spotlight

Entries and winners of the AWFS 2013 Visionary Awards

Staff Report

**V**isionary New Product Awards were given to seven exhibiting companies at last month's AWFS Fair 2013. Recognizing creativity and innovation, as well as leadership in green/environmental product development, the winners were selected from 65 entries.

The winning companies and products are: Bioformix Inc., **Nexabond 2500** Wood Adhesive; Biesse America, **AirForce Hot Air Edgebanding**

Technology; SNX Technologies, **Vitap Eclipse** Automated Contour Edgebander; Senco, **Duraspin** Auto Feed Screw Systems; Mozaik Software, **Mozaik CNC** Complete Software; Kremlin-Rexson-Exel North America, **EOS Pump**; and Graco Inc., **PD2K**.

Listed below is information on the winning products, as well as all the entries in the 2013 Visionary Awards. More information also can be found online at [WoodworkingNetwork.com/AWFS-Fair](http://WoodworkingNetwork.com/AWFS-Fair).



Biesse America

### A.A.C. Forearm Forklift

#### Entry: Moving Harness

Moving Harness is for lifting and moving items of all sizes such as furniture, safes, woodworking machines, and more. Used in conjunction with Forearm Forklift Lifting Straps, Moving Harness employs a leverage that makes items being carried seem 66% lighter, the company says. (888) 334-1133, [forearmforklift.com](http://forearmforklift.com)

### Alanon GmbH & Co. KG

#### Entry: Celialux

Celialux is a customizable LED lighting technology that can produce colors and color blends. Alanon says it is suitable for the simulation of daylight, reflecting the light of an "invisible" LED light in the room. It features a printable glass cover and comes in different sizes and frame colors. (440) 327-8184, [alanod.com](http://alanod.com)

### Apollo Sprayers Intl

#### Entry: ECO-3

The ASI-HVLP ECO-3 turbine system comes with a choice of two Apollo HVLP spray guns, the E5011 and E7000, and a foam filter with QT Quiet Technology in a case designed to allow full ventilation and air filtration. The ECO series also includes a 20' air hose with quick disconnect to the spray gun. ECO-3 sprays a range of thin- to medium-viscosity finishes. (888) 900-4857, [ASI-HVLP.com](http://ASI-HVLP.com)

#### Entry: ECO-4

Apollo Sprayers' ASI-HVLP ECO-4 turbine system comes with a choice of two Apollo HVLP spray guns, the E5011 and E7000, and

a foam filter with QT Quiet Technology in a case designed to allow full ventilation and air filtration. ECO also includes a 20' air hose with quick disconnect to the spray gun. ECO-4 offers a range of coating viscosities. (888) 900-4857, [ASI-HVLP.com](http://ASI-HVLP.com)

### ASW Machinery dba Felder Group USA

#### Entry: Silent Power Cutter Block

For joiners and planers, Felder's new patented "Silent-Power" spiral cutterblock, with a drawing cut, features 10dB noise reduction due to the spiral cutterhead design; insert carbide knives that increase tool life by up to 20 times; carbide insert knives that are 4-sided for extended time between knife replacement; and shear cutting angle. (866) 792-5288, [FelderUSA.com](http://FelderUSA.com)

### Biesse America

#### Winner: AirForce Hot Air Edgebanding Technology

Biesse's AirForce Hot Air edgebanding technology allows panel processors to have a glue-free system to weld laser edges without the need of a complex and expensive laser system. (877) 8-BIESSE, [BiesseAmerica.com](http://BiesseAmerica.com)

#### Entry: Twin Pusher

Biesse says its new 4 Series Twin Pusher 1.2 can improve the output of a standard Sektor Series saws by up to 25%. (877) 8-BIESSE, [BiesseAmerica.com](http://BiesseAmerica.com)

#### Entry: bSolid Software

Available from Biesse, bSolid has a new

learning system that offers simplified process management, improved performance and reduced machining times. (877) 8-BIESSE, [BiesseAmerica.com](http://BiesseAmerica.com)

### Bioformix

#### Winner: Nexabond 2500 Instant Wood Adhesive

Bioformix offers Nexabond 2500 Instant Wood Adhesive, a high viscosity, water-free adhesive for assembly of materials that require uniform stress distribution and high strength. The "Super Glue" for wood is made without any solvent, which means components glued with Nexabond achieve high bonding strength in minutes because there is nothing to evaporate. This also means that wood joints won't swell, eliminating long dry times, Bioformix says. (513) 448-0308, [Bioformix.com](http://Bioformix.com)

### Blum

#### Entry: Servo-Drive for Aventos

Blum introduces the Servo-Drive for use with the Aventos electronic opening system for lift doors on upper cabinets. The electronic opening system opens upward, says Blum, with a light touch of the door. Activation lifts the door(s) up and out of the way. A wireless switch closes the door and is typically mounted at the bottom of the cabinet. (800) 438-6788, [Blum.com/us/en](http://Blum.com/us/en)

### Casadei-Busellato USA

#### Entry: THESIX

THESIX offers vertical and horizontal drilling and grooving. There are no vacuum cups or panel supports to position. The machine moves the part in its long axis and moves the machining head over and across the short axis, and the motion of the machining head is limited to the width of the part. (336) 854-1211, [Casadei-Busellato.com](http://Casadei-Busellato.com)

### CIM-TEC.COM, INC.

#### Entry: SOLID-CIM3D

CIM-Tech offers Solid-CIM 3D for programming or nesting 3D solid parts and assemblies from AutoCAD, Autodesk

Inventor and many other solid modeling products. Automatic Feature Recognition (AFR) works directly on 3D solids and 3D solid assemblies to lay parts flat and identify machine operations. With one click, nested programs for any CNC machine are created with a cutlist. (866) 823-4366, [CIM-Tech.com](http://CIM-Tech.com)

### The Collins Companies

#### Entry: MR50 Pine FreeForm PB

Collins says its FreeForm pine particleboard's MR50 product line meets the moisture-resistant specifications for ANSI A208.1-2009. Collins' MR50 products are suitable for a wide-range of laminating applications. Collins says its line is the industry's first MR50 rated particleboard. (800) 329-1219, [CollinsCo.com](http://CollinsCo.com)

#### Entry: MR50 Pine Particleboard

Collins' pine particleboard's MR50 product line meets the moisture resistant specifications for ANSI A208.1-2009, and is suited for use in kitchen, bath, hospitality and other environments with high humidity and incidental moisture contact. Collins adds that its MR50 products have no added formaldehyde (NAF) and contain 100% post-industrial wood fiber. (800) 329-1219, [CollinsCo.com](http://CollinsCo.com)

### DAMSTON, Inc.

#### Entry: D300 Wood Panel Clamp

Damston's D300 panel clamp prevents the curvature of wood during the gluing process and significantly minimizes the manipulation by using less tooling compared to the conventional method, the company says. The D300 offers the user the opportunity to work with different thicknesses of pieces of wood up to 4-1/2" while simultaneously making a 36" long laminated panel. (450) 824-1592, [damston.com](http://damston.com)

### Delmhorst

#### Entry: ProScan Moisture Meter

ProScan is a pinless moisture meter that features built-in species corrections by



# Visionary Awards



**Damston**



**Dixon Enterprises**



**ASW Machinery/Felder Group**



**Invis North America**

allowing the user to key in the specific gravity of the wood being tested. In addition, ProScan has a "HOLD" feature so that the operator can freeze a reading on screen, and offers a user-adjustable alarm and built-in calibration check. (973) 334-2557, [delmhorst.com](http://delmhorst.com)

## Dixon Enterprises

### Entry: SurfPrep Foam Abrasives

Dixon Enterprises' SurfPrep is a sanding system for prep and finish sanding. The SurfPrep System includes: proprietary abrasive grains bonded to foam with a flexible, environmentally friendly, non-loading adhesive in sanding pads and discs; low-profile, orbital and random orbital air sanders; and back-up pads available in a variety of shapes and sizes. (951) 245-4200, [dixonabrasives.com](http://dixonabrasives.com)

## Ecogate, Inc.

### Entry: Automatic Calibration and Mapping Software

Ecogate's energy-saving Automatic Calibration and Mapping Software in the greenBOX Master automatically measures ventilation system performance in the full range of operating conditions. It optimizes system settings to obtain the maximum possible energy savings, while maintaining minimum transport velocities in the ducting system. (818) 506-6016, [ecogate.com](http://ecogate.com)

### Entry: Velocity Sensing Gate for Energy Savings

Ecogate's energy-saving gate for industrial ventilation systems measures air velocity, pressure and volume, then transmits the information to the Ecogate greenBOX Master where it is used as system control and balancing. The system automatically recalibrates after changes to the dust collection system for optimal operation. (818) 506-6016, [ecogate.com](http://ecogate.com)

## Fuji Ind. Spray Equipment

### Entry: T-Series Spray Gun

The Fuji T-Series Spray Gun features an exclusive side-mounted Pattern Control Knob to adjust the size of the fan and is non-bleed, which means that air passes through the spray gun only when the trigger is pulled. The T-series has a chrome gun body finish, ergonomic stay-cool handle and all stainless steel passages. (800) 650-0930, [fujispray.com](http://fujispray.com)

## General Tools & Instruments

### Entry: E-Z Pro Crown King

The E-Z Pro Crown King accurately cuts

crown moulding, producing interior and exterior corner joints with the three most common crown moulding spring angles (38, 45 and 52 degrees). Comprised of two pieces – the jig itself and a versatile and reconfigurable insert/adaptor – the E-Z Pro Crown King requires no assembly. (800) 697-8665, [generaltools.com](http://generaltools.com)

## Graco Inc.

### Winner: PD2K

Graco says the ProMix PD2K two component proportioning system delivers superior ratio accuracy while reducing waste from color changes and flushing by up to 80%. The ProMix PD2K works for all two-component materials and incorporates electronic fluid management, meaning there are no fluid regulators to flush and the user can maintain optimal transfer efficiency, Graco says. (612) 623-6000, [graco.com](http://graco.com)

### Entry: E-Flo

The E-Flo DC electric pump requires only 110V or 220V power, eliminating the dependence on an inefficient compressed air system. The E-Flo DC operates like a traditional pneumatic pump, and can still under pressure and change speeds to maintain a constant pressure. (612) 623-6000, [graco.com](http://graco.com)

### Entry: Informer

The Informer is a tool for reducing paint waste, collecting data and improving the finishing process. This fluid monitoring package measures flow rate and the amount of material that passes through a fluid line while the optional Advanced Web Interface (AWI) lets the user gather information right from his or her office. (612) 623-6000, [graco.com](http://graco.com)

### Entry: PROControl 1KE

Graco's ProControl 1KE not only monitors paint performance, but can manage both fluid or air pressure to precise spray parameters. Graco says the ProControl 1KE also can decrease errors when upper and lower limits are set for flow rate and fluid pressure, or allow the operator to adjust the output within preselected limits. (612) 623-6000, [graco.com](http://graco.com)

## HSD USA

### Entry: ES951 E-CORE

HSD Mechatronic Solutions offers the ES951 e-core 'intelligent' spindle. Its "smart" control system features real-time electrospindle rotation speed, working hours data monitoring and recording at different rotation speeds and digital

sensors calibration. The ES951 e-core comes Canopen and I/O Link FIELDBUS ready, and the modular construction allows the shaft kit to be frontally replaced. (954) 587-1991, [hsdusa.com](http://hsdusa.com)

## Inmes-USA, Inc.

### Entry: IM-2900 Beam Panel Saw

The IM-2900 Concept beam saw features a length cutting capacity of 2900mm and height of 45mm with variable feed-rate from 10 up to 30 ppm and return of 30 ppm. The IM-2900 is equipped with a set of horizontal hardened and ground cylindrical shaft guides at 4000 meter length. The vertical linear guide also provides smooth raising and lowering of the cutting group. (732) 503-1072, [inmes-usa.com](http://inmes-usa.com)

## Invis (North America)

### Entry: Invis MX Minimag

INVIS North America offers the Invis MX Minimag joiery system by Lamello. Magnet-driven connections allow the system to be invisible as well as detachable. The Invis Mx allows for a more industrial use of Invis fasteners, and the starter kit includes the Mx Minimag, two insertion tools, a flexible shaft to access any corner, and 20 Invis Mx fasteners. (877) 867-9019, [SwissINVIS.com](http://SwissINVIS.com)

## KCD Software

### Entry: KCD Touch

KCD Touch software for cabinet and closet makers allows users to capture site details and design on a tablet and includes the KCD Touch Designer interface with 3D imaging of the finished look. Users can add data directly into the Designer interface, including room and wall measurements, photos, notes, cabinet and closet size, shape and style, etc. (508) 760-1140, [KCDSoftware.com](http://KCDSoftware.com)

## Kerfkore

### Entry: Balsakore

Balsakore combines the flexibility of patented Kerfkore bendable products with a lightweight core product that can provide the perfect mix of the two methods, the company says. The core is made from a low-density balsa wood that is lightweight – up to 80% less than other conventional materials, Kerfkore says – but when used in an end-grain configuration is still able to provide the strength and performance required. (800) 637-3539, [kerfkore.com](http://kerfkore.com)

## Kleiberit Adhesives USA

### Entry: Hot Coating

Kleiberit offers Hot Coating technology,

with a gloss level of 90 points that can be produced with one application without interim sanding. Depending on specifications, abrasion resistance up to AC5 can be achieved with a relatively low coat weight, Kleiberit says, in addition to high-impact resistance, with universal adhesion to decorative papers, digitally printed surfaces or wood. (704) 843-3339, [kleiberit.com](http://kleiberit.com)

## Komo Machine, Inc.

### Entry: Fusion XL CNC Router

Komo Machine's Fusion XL 510 CNC router has a standard traveling table/stationary gantry configuration and includes an 18-hp fan-cooled spindle with 15-station tool changer and precision-machined composite grid vacuum table available in 5x10', 5x12' or 5x24' sizes. Fusion XL also uses the latest Fanuc 0i-MD control, which includes enhanced servo loop software, and Fanuc's top-of-the-line HVI servo motors. (732) 719-6222, [komo.com](http://komo.com)

## Kremlin Rexson, Exel NA

### Winner: EOS Pump w/Xcite

### Avrmix Manual Spray Gun

Kremlin's EOS Pump with Airmix Xcite Manual Spray Gun is a finishing system for solvent and/or water-based materials, lacquers, varnishes, polyurethane, 2K, high solids, stains, and WB glues. The EOS Pump Range comes with two pumps, 15-C25 and 30-C25, and partnering the EOS pump with the Kremlin Xcite Airmix manual spray gun provides up to 86% transfer efficiency. (734) 979-0100, [kremlinrexson-sames.com](http://kremlinrexson-sames.com)

## Leitz Tooling Systems LP

### Entry: I-Door Insert Tooling

Leitz's Internal Door (I-Door) combination carbide/diamond insert tooling uses a lightweight aluminum body and a combination of standard carbide inserts and diamond inserts. Replaceable diamond inserts at the top and bottom of the tool process the top and bottom surface laminates, while standard carbide inserts process the softer core material, resulting in smooth edge quality, Leitz says. (800) 253-6070, [leitztooling.com](http://leitztooling.com)

## Lockdowel

### Entry: Lockdowel Fasteners

Lockdowel fasteners snap-together furniture, cabinets and other wood products in just a few minutes without special tools or instructions. Joints are strong and sturdy and have the look and feel of factory assembled





# Visionary Awards



**HSD USA**



**KCD Software**



**Lockdowel**



**Micro Fence**

joints, the company says. Lockdowel fasteners enable manufacturers to reduce transportation costs by five or six times by shipping flatpack and assembling at the point of sale or delivery, the company adds. **(650) 477-7112, lockdowel.com**

## Micro Fence

**Entry: DynaGlide Plus with HD4X**  
DynaGlide Plus with HD 4X is a dry lubricant with proprietary additives engineered for all woodworking tools and metal surfaces. Silicone and Teflon-free, DynaGlide Plus eliminates finishing problems due to the transfer from metal woodworking tool surfaces, says the manufacturer. It will not stain or discolor and virtually eliminates drag co-efficients, smoothing feeds on table and band saws, jointers, planers, shapers and hand-held routers, says the company. **(800) 480-6427, MicroFence.com**

## Entry: Micro Plunge Base

Micro Plunge Base offers portability and precision for jobs like installing hardware, architectural detailing, inlay work and precision repair requirements, according to Micro Fence. It is made to accept a number of different high-speed rotary tools and pencil die grinders. When paired with a Dremel, ForeDrem handpiece or Proxxon tool, it offers stability with the benefit of micrometer control for depth-of-cut adjustments, Micro Fence says. **(800) 480-6427, MicroFence.com**

## Micro Jig, Inc.

**Entry: Microdial Tapering Jig**  
The Microdial tapering jig uses interlocking Colomatch to ensure the angle of the taper to 1/8th of a degree incrementally up to 10 degrees. Memorylock provides the ability to work faster by switching quickly and easily between two tapers on a single work, the company says and Microdial also can create up to 2-, 4-, 6- and 8-sided tapered legs on the table saw, router table, and band saw. **(407) 696-6695, MicroJig.com**

## Microvellum Software

**Entry: Blueprint Editor**  
Microvellum's Blueprint Analyzer is an automated solution for digital takeoffs, estimating and submittal drawings. It allows the user to create accurate bids and process them straight through to manufacturing with one streamlined and connected system. Microvellum says the Blueprint Analyzer automates the process of renaming digital page names to match the architectural drawing, navigates large

sets of plans and saves views for future reference, analyzes plan revisions, and makes annotations and markups on plans and shares them digitally. **(800) 204-0913, Microvellum.com**

## M.L. Campbell

**Entry: EnviroVar**  
M.L. Campbell's Clean Cure Technology platform provides acid cure formaldehyde free amino-alkyd pre-catalyzed and post-catalyzed finishing systems that are both low odor and HAPs-free, helping to create a safer working environment. **(800) 364-1359, MLCampbell.com**

## Entry: EnviroMax

The Clean Cure Technology platform provides acid cure formaldehyde free amino-alkyd pre-catalyzed and post-catalyzed finishing systems that also are low odor and HAPs-free. Products with Clean Cure Technology are designed to apply easily, cure at normal ambient temperature and dry to a smooth-touch finish with durability and depth, says M.L. Campbell. **(800) 364-1359, MLCampbell.com**

## Mohawk Finishing Products

**Entry: Architectural Line**  
The Mohawk Architectural Finishing product line includes a wide selection of both solvent and waterborne stains, sealers and topcoats that can be applied to stationary structures in compliance with local, state and federal VOC requirements. Mohawk Finishing Products is a member of PaintCare, ensuring compliance with state recycling regulations, and is registered with the EPA as a manufacturer of architectural coatings. **(800) 545-0047, Mohawk-Finishing.com**

## Mozaik Software

**Winner: CNC Complete Software**  
Mozaik CNC is a screen-to-machine software solution for cabinets, commercial casework, closets, furniture, and more. A subscription to Mozaik CNC includes updates, support, training videos, an online knowledge base and customer forums, and the link to the user's CNC router. Mozaik CNC is seamlessly integrated with Sketchup, providing the tools needed to design and model most projects. **(619) 752-5910, MozaikSoftware.com**

## Oliver Machinery

**Entry: Contour Edgebander**  
Oliver Machinery's Contour Edgebander

applies banding tape to 360 degrees on irregular shaped workpieces; not just simple round pieces but pieces of virtually any shape and with radiuses of 30mm or 50mm are easily done, the company says. Tape from 0.45mm to 3mm thickness is accepted, and the working head on the machine travels around the workpiece rather than the workpiece spinning as on other machines, Oliver says. **(800) 559-5065, OliverMachinery.net**

## Entry: Noiseless Edgebander

Oliver Machinery's noiseless edgebander reduces noise through the use of a newly designed top and bottom trimming system, increasing productivity by allowing the distance between workpieces to be decreased to 60cm, the company says. **(800) 559-5065, OliverMachinery.net**

## Pony Clamp, Inc.

**Entry: Pony Casework Claw**  
Pony Casework Claw was designed for the installation of frameless construction cabinets, commercial casework, closet/garage systems and storage shelving. It combines the multiple steps of installation into one process, aligning cabinets for mounting and fastening in one step. Its design gives it the ability to clamp and align casework, horizontally and vertically, at the same time, Pony Clamp adds. **(312) 666-0640, AdjustableClamp.com**

## Rev-A-Shelf LLC

**Entry: Rev-A-Motion Soft-Close**  
Rev-A-Shelf offers the 5149 Series Rev-A-Motion Soft-Close Aluminum Waste Containers, available in single and double door mounts. The only brushed aluminum system with Rev-A-Motion Soft-Open/Soft Close slide technology, it provides smooth operation even under the heaviest of loads, the company says. The design features mitered corners that make up the aluminum frame, adjustable door mount brackets and a clean polymer base. **(800) 626-1126, Rev-a-Shelf.com**

## Safety Speed Manufacturing

**Entry: SPM301 Screw Pocket**  
Safety Speed's SPM301 Screw Pocket Machine, features cam-driven action for fast, smooth cutting under mechanical control throughout the machine cycle. The pilot drill and ball end mill produce superior low-angle screw pockets, says Safety Speed, and the SPM301's mechanical linkage allows the pilot drill and router bit to cut at the same time, reducing cycle time without sacrificing

cut quality. It is manufactured in the USA. **(800) 772-2327, SafetySpeed.com**

## SawTrax Mfg. Co.

**Entry: Dolly Max**  
SawTrax calls the Dolly Max the Swiss Army Knife of Utility Dollies. It can be used as a dolly, hand truck, wheelbarrow, flat shop cart, panel cart and tear-out cart. Made in the USA, it features all-steel construction, a powder-coated frame, 1.25" square steel posts, all-terrain tires, 10 vertical post positions, 6 horizontal post positions, a 700 lb capacity, locking 5" casters and 12.25" pneumatic off-road tires. **(770) 974-0021, SawTrax.com**

## Scm Group

**Entry: Routech Accord 30FX**  
The Routech Accord 30 FX is an advanced 5-axis CNC routing machine designed with a fixed table and moving gantry with 100% tool coverage of the work envelope. The machine incorporates the Prisma KT 5-axis routing spindle, delivering up to 20 hp at 9,000 rpm. **(770) 813-8818, ScmGroupNA.com**

## Entry: OMAL HBD Pocket Mortise

The OMAL HBD 2500 Pocket Mortise machine is a CNC machine to drill, glue and insert dowels, pocket mortise, and vertically and horizontally drill horizontal pieces with four loading zones. The OMAL Sure Shot revolver system guarantees a dowel is inserted every time, says Scm. **(770) 813-8818, ScmGroupNA.com**

## Senco

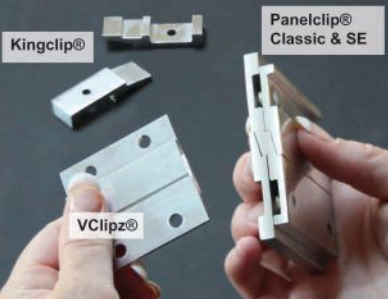
### Winner: Duraspin Auto Feed Screw Systems

Senco's next generation of Duraspin integrated auto-feed screw systems increases jobsite productivity by at least 30%, according to the company. Available in both corded and 18V Li-ion battery powered models, these tools drive screws from 1" to 3" long into hardwoods, drywall, composite and steel, and can be used for framing, cabinet installation, deck construction, subfloor and more. **(800) 543-4596, Senco.com**

## Entry: 23-Gauge Micro Pinners

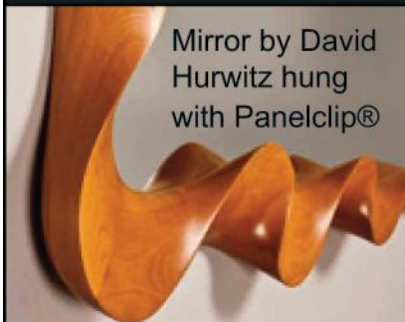
Senco's 23-gauge pneumatic Micro Pinners incorporate performance-enhancing upgrades suggested by pros, the company says, including: an expanded fastener range from 1/2" up to 2" long, an easy load, self-adjusting magazine, a narrow nosepiece for reaching into tight spaces, an ergonomic angled pistol grip, an industrial grade motor for more driving

## Brooklyn Hardware MANUFACTURING



Brooklyn Hardware's extruded aluminum mounting hardware products have a 100% positive-stop interlock.

The Original Panelclip®, VClipz®, & Kingclip® provide the strongest, simplest solutions for your various installation needs.



Mirror by David Hurwitz hung with Panelclip®

## Simply secure.



Kingclip® allows has a mounting channel

Phone 503-232-1151  
Toll-free 1-888-232-1151

**facebook**

Installation videos & specs  
at [www.panelclip.com](http://www.panelclip.com)



## Visionary Awards



**Safety Speed**

power into hardwoods, and numerous safety features. (800) 543-4596, [Senco.com](http://Senco.com)

### Entry: F-18 Brad Nailer

Senco says its F-18 Fusion nailer possesses the rapid-fire power and consistency of an air tool and the convenient portability of a cordless tool, without the need for a separate compressor, air hose, or gas cartridges. The F-18 features an onboard cylinder of compressed air powered by an 18V Li-ion battery and drives 18-gauge nails from 5/8" to 2-1/8" long. (800) 543-4596, [Senco.com](http://Senco.com)

### The Sherwin-Williams

#### Entry: Sher-Wood F3 Finish Systems

Sherwin-Williams says its F3 line of formaldehyde-free finishes are traditional, catalyzed products with none of the formaldehyde typically emitted during application and curing. All F3 finishes are available for use as drop-in coatings on existing finishing lines. Sher-Wood F3 Kemvar Varnish has achieved GREENGUARD Certification, certified to standards for low chemical emissions into indoor air during product usage. (800) 524-5979, [OEM.Sherwin-Williams.com](http://OEM.Sherwin-Williams.com)

### SNX Technologies

#### Winner: Vitap Eclipse Compact Automated Contour Edgebander

Vitap's Eclipse is a semi-automatic contour edgebander that offers versatility, simple operation and requires a minimal footprint in the shop, according to SNX. The Eclipse comes with a trimming unit and is able to process large or small pieces without extra setup. It can work on straight or shaped edges. (320) 217-9044, [SNXTechnologies.com](http://SNXTechnologies.com)

### Spectrum Adhesives, Inc.

#### Entry: Spectrum C-Bond WBC

Spectrum C-Bond WBC water-based contact cement has no VOCs or HAPs and is provided in aerosol and canisters using a non-hazardous and environmentally friendly propellant system. The product bonds most materials including laminates, wood-based products, leather, cardboard, metals and plastics. It also is post-formable. Spectrum C-Bond WBC is non-hazardous under the OSHA Hazard Communication Standard, is California VOC compliant as a solvent free product and is also LEED compliant. When sprayed, the product sprays green for easier visibility to control coverage, but turns clear when dry. (901) 795-1943, [SpectrumAdhesives.com](http://SpectrumAdhesives.com)

### SuperMax Tools

#### Entry: 25-50 Drum Sander

Based on the company's experience with designing its award-winning 19-38 Drum Sander, SuperMax Tools says it has designed a method to flat-sand a wide (up to 50") board at an affordable price. The SuperMax 25-50 Drum Sander will be the largest open-ended drum sander on the market, the company says. (888) 454-3401, [SuperMaxTools.com](http://SuperMaxTools.com)



**TigerStop**

### TigerStop

#### Entry: SawGear with Crown+MiterPro

TigerStop's Crown + Miter Pro for SawGear software is designed to simplify all angle cutting. SawGear is a precise automated length measuring system that attaches to miter and radial arm saws. (360) 254-0661, [TigerStop.com](http://TigerStop.com)

### Entry: TigerAngle

TigerAngle is a fully automated push feed system that can be used to cut horizontal and vertical angles as well as the most complex angled parts and nest them in your material, according to TigerStop. (360) 254-0661, [TigerStop.com](http://TigerStop.com)

### Entry: TigerSaw 1000

The new TigerSaw 1000 is a fully automatic defecting and optimizing saw system for solid wood, setting a new standard in world-class performance, says TigerStop. (360) 254-0661, [TigerStop.com](http://TigerStop.com)

### Timbermate-HMT

#### Entry: HMT Natural Decorative Products

Timbermate-HMT says its 100% handcrafted decorative panel products are made of different indigenous raw materials such as bamboo, coco shells, vines, twigs, reeds, nuts, palm, abaca, and coco bark from islands of the Philippines. Usages, applications and sizes of panels are unlimited, the company says, and includes: ceilings, walls, doors, headboards, cabinets, railings, columns, dividers, and more. The indigenous materials also complement non-natural materials like glass and metal acrylic as accent pieces in architectural designs, the company says. 63-2 8392251, [HMTTradingphil.com](http://HMTTradingphil.com)

### Vollmer of America

#### Entry: Vollmer QXD250 PCD Tooling

Vollmer's QXD250 is an erosion and grinding machine for processing polycrystalline diamond (PCD) tipped tooling. The QXD250 offers six simultaneously controlled CNC-controlled axes with a new A-axis addition that enables complete machining in a single set-up. Travel and swivel ranges have been increased for larger tool diameters and lengths. A re-engineered spindle design allows more efficient grinding processes with increased flexibility for the processing of cutting tools. (412) 278-0655, [Vollmer-us.com](http://Vollmer-us.com)

### Voorwood

#### Entry: Model A11 Shaper Sander

Voorwood's Model A11 Shaper Sander shapes all components of cabinets, doors, drawer parts, and other wood components, while simultaneously sanding the desired finished dimension. The A11 sizes the substrate to the desired finished dimension, squares the substrate as all four sides are being processed, and processes straight edges, as well as curved edges, using a template system. (800) 826-0089, [Voorwood.com](http://Voorwood.com)



# Make Everything Shine!



## LED Closet Rod Kit

**Trimable to Fit Any Closet Opening**

### Kit Includes:

Standard Oval Closet Rod 30 x 15,  
Ribbon Flex Light & 2 Mounting Brackets

Available in 3 sizes:

3 Ft., 4 Ft. & 5 Ft.

**12V** Linear  
Material: Aluminum

### PRODUCT FEATURES:

- Available in **Cool White**
- Clear Anodized Aluminum



**As Low As**

PART #	LENGTH	PRICE PER KIT
LED-CLOSET-3	3 Ft.	\$36.00
LED-CLOSET-4	4 Ft.	\$47.50
LED-CLOSET-5	5 Ft.	\$57.00

## Venus Ultra Bright LED Puck Light

Outshines a 20 watt Halogen Bulb...  
only 3 watts



**24V** Surface  
Material: Aluminum  
with Clear PVC Lens

- Extremely bright 3-1/2" diameter produces a "Shower of Light"
- Installs easily with one screw
- Beautifully crafted all metal construction
- Ultra low profile, .25" thick
- \*Available in **Polished Chrome** and **Brushed Chrome**
- \*Available in **Pure White** and **Warm White**

**LED-VEN-\***

**\$22.75 Ea. 10+: \$19.10 Ea.**

## Utopia Ultra Bright LED Puck Light



**24V** Surface  
Material: Aluminum  
with PVC Lens

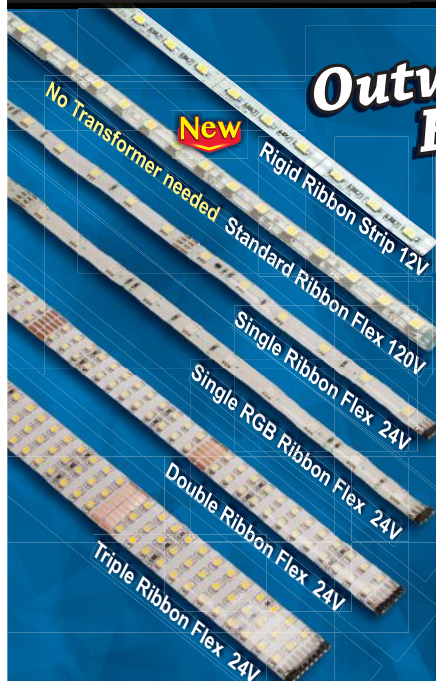
- All metal construction
- Surface or Recess mount
- Available in **Matte Chrome**
- \*Available in **PureWhite** and **Warm White**

**LED-UTO-CHR-\***

**\$10.25 Ea.**

**10+: \$8.60 Ea.**

## Outwater's Expanded Selection of LED Ribbon Lighting & Mounting Channels for 2013



### Single, Double and Triple LED Ribbon Lighting

- Fully customizable – 100% usable – Can be cut and used without any waste
- Offered in Cool White, Pure White, Warm White, Red, Green and Blue
- Offered in 12V, 24V and 120V
- Luminescence output from ambient to ultra bright – A range for every application
- Offered with a wide selection of Connectors and Accessories from which to choose

### Universal LED Ribbon Mounting Channels

- Offered in 8' lengths
- More than 20 different Aluminum profiles: Recessed, Surface Mounted 180, Surface Mounted 90, Reverse Cove, Edge Light
- Many styles come with Plastic Lenses



Serving the Industry Since 1972

**FREE 1,000+ Page Catalog!**

**Outwater Plastics Industries, Inc.**

New Jersey • Arizona

**1-800-631-8375**

**www.outwater.com/vip4**

Lowest Prices...  
Widest Selection...  
All From Stock!





## Classifieds



**Spicy Domestic & Exotic Sheet Veneer**  
4 x 8 to 5 x 12  
10, 20, 30 mil paperback  
2-Ply woodback  
SuperBack hi-performance laminate  
PSA  
Stock & Made to order  
**No Minimum Order**  
Order online: [www.superiorveneer.com](http://www.superiorveneer.com)  
ph: 812.941.8850 fax: 812.941.8780




Custom Organizational Products made to your dimensions. Any size, any quantity. Free quotes. Dealer pricing to re-sellers.

• Custom Inserts •  
[www.custominserts.com](http://www.custominserts.com)  
1-877-4-CUSTOM

**Sturdy Industrial Carts**



Clamp Cart  
CLC 2000  
30" W x 35 5/8" L  
x 54" H  
Custom Sizes Available

**Custom Carts**  
406-642-9824 • [www.customcarts.biz](http://www.customcarts.biz)

**PHASE-A-MATIC™**

**NEED 3-PHASE POWER for your woodshop?**

Most models immediate delivery from stock  
Economical, easy to install & use  
Extremely quiet operation

**STATIC CONVERTER:** 2/3 RATED HP  
Light to moderate motor loads only

**ROTARY CONVERTER:** FULL POWER  
True 3-phase output  
Quality Baldor motor portion  
CNC PAC for voltage stabilization

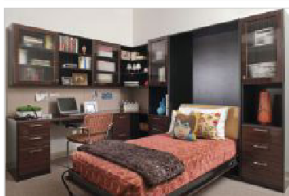
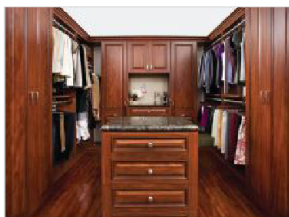
**1-800-962-6976**  
[www.phase-a-matic.com](http://www.phase-a-matic.com) STATIC & ROTARY CONVERTERS




## CUSTOM CLOSETS *at*, COMPETITIVE PRICES, *with* NO HASSLES

At the Closet Works, Inc. we have been selling, designing, manufacturing and installing custom closets, home offices, mudrooms, wall units, cabinets, pantries and garages for almost 24 years. **We know the business!**

- 16 Tafisa Colors in Stock
- 2mm Edge banding standard on all products
- 5 Piece Doors and Drawer Fronts in 3 styles at competitive prices
- Drawers shipped RTA – Doweled Assembly
- Custom Fronts with Glass Inserts
- A Full Range of Hardware & Accessories
- Order by the job – No Minimums
- Custom Sizing at no additional cost
- Design Catalogue with Pricing for KCD software
- 1" Matching Melamine Tops as well as HPL Available



160 Commerce Dr., Montgomeryville, PA 18936

[www.closetworksincc.com](http://www.closetworksincc.com)



Contact David Cutler at 1-800-300-7285

## Do what you do best (and leave the rest to us!)

**Basic to complex, simple to exotic**  
— we bring your creativity to life!

For nearly 30 years, Closet City has helped businesses like yours grow by fabricating the best made-to-order systems!

**Aggressively priced • Expertly crafted**



- No minimums; order by the job or truckload
- Fast turn around
- Design software services
- New textured finishes
- Now a master distributor for WoodTrac® ceiling, garage & pre-packaged closet products

closets • cabinetry • laundry  
mudrooms • home offices  
pantry • kitchen • wall units

**CONTACT US TODAY!**

*Closets*  
& CABINETS  
by Closet City Ltd.

**1-800-342-0070**

email: [info@closetcity.com](mailto:info@closetcity.com)  
[www.closetcity.com](http://www.closetcity.com)



# Business Opportunity for Cabinet Refacer

By Wade Vonasek

For clients seeking an alternative to replacement, cabinet refacing gets you in the door and on the job.

**A lower cost alternative** to replacement cabinetry or to refresh a kitchen look, cabinet refacing gets you in the door and on the job. Elias Woodworks, a wood components manufacturer of doors and drawers, also provides matching materials for cabinet front and side refacing. Here are some questions Elias Woodworks frequently fields, from its online booklet.

## What is Refacing?

Refacing means replacing the doors, drawer fronts and hardware, as well as covering the sides and framework with stick-on veneer or glued-on plywood, all without having to replace the old cabinet boxes.

## What are benefits for clients of cabinet

## refacing vs. new kitchen remodeling?

Clients get a new kitchen look at an average of one-third the cost of a new kitchen. Jobs can be completed in 2-4 days, and there is no hassle to coordinate plumbers, electricians, and floor installers, since it matches the existing footprint exactly. The kitchen is also still functional during renovation.

There are no additional costs in repainting, plastering, or redecorating, and countertops can stay in place. Refacing is environmentally friendly (less materials go to landfills), and updated kitchens increase home value instantly.

## How can refacing increase my businesses' bottom line?

It opens up a new target market of customers who would otherwise not be able to afford a new kitchen remodel. Because refacing costs are lower,

customers can also purchase other products like flooring, countertops and hardware. The *Remodeling Cost vs. Value Report 2013* says that refacing, also known as "Minor Kitchen Remodeling" is within the top 10 replacement projects again this year.

According to *Remodeling Magazine*, the biggest gainers this year were mostly replacement projects, which it says have always outperformed discretionary remodeling projects, and more so in recent years as the economic recession brought price to the forefront.

## How do I know if a kitchen qualifies for kitchen refacing?

If the client likes the layout of the current kitchen, refacing works well, but if they plan on knocking down walls, it may not be the best option. Existing cabinets must also be structurally sound.

## What tools are typically needed to complete a refacing project?

As with any type of remodel, there are several installation methods, but some of the more common tools used to reface are a utility knife, screwdriver, cordless drill/driver, handsaw, tape measure, level, clamps, brad nailer, hammer, nails, screws, small pry bar, wood glue, straight edge, miter saw and table/circular saw.

## How do I replace toe-kicks?

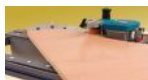
Order 1/8" finished cut-to-size plywood or finished 3/16" refacing stock, then cut on site, or veneer the existing toe kick in place.

**Find more** at Elias Woodwork's Refacing Material section: catalog, FAQ's and a refacing measuring guide. [eliaswoodwork.com](http://eliaswoodwork.com)



## New Glue Pot Edge Banders

Tapes of up to 3mm+Laminate strips, speed & temperature control, glue spread control, tape feed control, adjustable tape exit, glue dosage control and many new features - **PEB250TRC**



For curved & Large Panels



End cutter



Speed & Temperature Control. Glue Dosage and Spread Control



Make it portable for large counter top, PVC, Wood Laminate strips



Laminate cutter, Files Veneer Miter Cutter



Edge Lipping Planer



Door Tools Lock Mortiser Hinge Router Door Lifter



Hot Air Edge Banders



[www.virtutex.com](http://www.virtutex.com)

50 Hill Street, Southampton, NY 11968  
800-868-9663 - [virtutex@aol.com](mailto:virtutex@aol.com)

## AD INDEX

ADVERTISER	PAGE #
Adams Wood Products Inc. ....	25
www.adamswoodproducts.com 423-587-2942	
Alphacam.....	31
www.alphacam.com 800-461-2015	
Arkansas Wood Doors.....	20
www.arkansaswooddoors.com 479-968-5486	
Association of Closet & Storage Professionals.....	CLO-12
www.closets.org 630-510-4590	
Bainbridge Manufacturing Inc.....	20
www.bainbridgemfg.com 800-255-4702	
Better Vacuum Cups.....	26
www.GreenBVC.com 877-872-2821	
Biesse America.....	32
www.biesseamerica.com 877-8-BIESSE	
Brooklyn Hardware.....	38
www.panelclip.com 888-232-1151	
Cabinet Vision.....	9
www.cabinetvision.com 800-280-6932	
CabParts, Inc.....	19
www.cabparts.com 888-398-1802	
Capella Hardware Company.....	CLO-13
www.capellahardware.com 888-658-5758	
Castle Inc.....	26
www.castleusa.com 800-282-8338	
C.C.F. Industries.....	25
www.ccfdrawers.com 800-581-3683	
Clear Systems.....	CLO-13
www.clearsystemsonline.com 800-399-8638	
Conquest Industries.....	15
www.conquestind.com 800-368-2278	
CSH/Custom Service Hardware.....	11
www.cshhardware.com 800-882-0008	
DC Distributing.....	15
www.dc-dist.com 800-727-0917	
Decore-ative Specialties.....	3
www.decore.com 800-729-7277	
Doug Mockett & Co.....	CLO-9, CLO-14
www.mockett.com 800-523-1269	
Drawer Connection.....	4
www.drawerconnection.com 877-917-4887	
EdgeCo Inc.....	27, CLO-9
www.edgecoinc.com 888-EDGE001	
ESI.....	13
www.esi4service.com 800-470-5831	
Gingrich Woodcraft.....	22
www.woodworkingnetwork.com/gingrich 877-DOV-TAIL	
Grass America Inc.....	7
www.grassusa.com 800-334-3512	
Grizzly Industrial, Inc.....	IFC
www.grizzly.com 800-523-4777	
Gyford Standoff Systems.....	27
www.standoffsystems.com/woodworking 775-829-7272	
Hoffmann Machine Co Inc.....	33
www.Hoffmann-USA.com/ 866-248-0100	
KCD Software.....	15
www.kcdsoftware.com 508-760-1140	
Keystone Wood Specialties.....	14
www.keystonewood.com 800-233-0289	
KML Designer Finishes.....	CLO-14
www.kmlcorp.com 888-358-5075	
Lignomat USA Ltd.....	31
www.lignomat.com 800-227-2105	
Martincraft Wood Products LLP.....	32
715-229-4080	
Martin Woodworking Machines Corp.....	20
www.martin-usa.com 704-921-0360	
Mastercam/CNC Software Inc.....	30
www.mastercam.com 800-228-2877	
Northern Contours.....	24, CLO-9
www.northerncontours.com 866-344-8132	
Northwest Hardwoods.....	18
www.northwesthardwoods.com 866-870-3040	
October Company, Inc.....	CLO-13
www.octobercompany.com 800-628-9346	
Oliver Machinery.....	23
www.olivermachinery.com 800-559-5065	
Oneida Air Systems.....	25
www.oneida-air.com 800-732-4065	
Osborne Wood Products.....	23
www.osborneproducts.com 800-481-2307	
Pennsylvania Lumbermens Mutual Insurance Co.....	19
www.plmins.com 800-752-1895	
Plus Closets.....	CLO-7
www.plusclosets.com 866-826-PLUS	
Richelieu.....	CLO-7
www.richelieu.com 800-619-5446	
Safety Speed Manufacturing.....	33
www.safetyspeed.com 800-772-2327	
Sidelines, Inc.....	CLO-2
www.sidelinesinc.com 480-767-9091	
Stiles Machinery.....	CLO-3
www.stilesmachinery.com 616-698-7500	
Vacuum Pressing Systems Inc.....	22
www.vacupress.com 800-382-4109	
Vanguard.....	CLO-14
www.vanguard-plastics.com/shelf/ 877-881-7875	
Versatile Building Products.....	CLO-5
www.1dayepoxy.com 888-720-1650	
Wagner Meters.....	33
www.wagnermeters.com 800-634-9961	
WalzCraft.....	27
www.walzcraft.com 800-237-1326	
Witmer Wood Products.....	31
info@witmerwood.com 800-643-1158	
Woodworking Machinery & Supply Expo.....	8
www.woodworkingexpo.ca 866-967-2015	

# Custom Woodworking

woodworkingnetwork.com

BUSINESS

## EDITORIAL

**Bill Esler**

Associate Publisher/Editor-in-Chief

besler@vancepublishing.com; (847) 415-8027

**Rich Christianson**

Associate Publisher/Editor-at-Large

rchristianson@vancepublishing.com; (847) 415-8024

**Karen M. Koenig**

WP Editor-in-Chief/Red Book Editor

kkoenig@vancepublishing.com; (847) 634-4366

**Michaelle Bradford**

Managing Editor

mbradford@vancepublishing.com; (847) 415-8057

**Stephanie Junca**

Web Production Editor

sjunca@vancepublishing.com; (847) 415-8015

## Contributing Editors

Jo-Ann Kaiser, Bernie Bottens, Jared Patchin, Chip Yawney, Don Carli, Elizabeth Christianson, Wade Vonasek and Sean Lechowicz

## MANAGEMENT

**Steve Reiss**

Vice President, Publishing Director

sreiss@vancepublishing.com

(847) 634-4354

**Laurel Didier**

Vice President, Group Publisher

ldidier@vancepublishing.com

(847) 634-4365

## SALES

**Renee Stritar**

Sales and Communications Manager

rstritar@vancepublishing.com

(847) 634-4362

AB, IA, IL, IN, KS, KY, MB, MI, MN, MO, NB, ND, NE, NS, OH, ON, PA, PQ, SD, WI

**Jim Leahey**

Sales Manager

jleahey@vancepublishing.com

(847) 634-4341

AL, AR, CT, DE, FL, GA, LA, MA, MD, ME, MS, NC, NH, NJ, NY, RI, SC, TN, VA, VT, WV

**Laurel Didier**

ldidier@vancepublishing.com

(847) 634-4365

AK, AZ, BC, CA, CO, ID, MT, NM, NV, OK, OR, TX, UT, WA International

**Ellen Roundtree**

Classified Ads

eroundtree@vancepublishing.com

847-415-8030; 847-634-4374 fax

## MEDIA OPERATIONS

**Mike Curran**

Director of Media Operations

mcurran@vancepublishing.com

(847) 415-8054

**Katie Georgas**

Assistant Director of Media Operations

kgeorgas@vancepublishing.com;

(847) 415-8039

## CREATIVE SERVICES

**Himanshu J. Suthar**

Art Director

hsuthar@vancepublishing.com

(847) 415-8023

**Brittney Hackbart**

Assistant Art Director

bhackbart@vancepublishing.com

(847) 415-8018

## CIRCULATION/PRODUCTION

**Donna Hansen**

Director of Audience Development

dhansen@vancepublishing.com

(847) 634-7891

**Jenny Barnette**

Senior Production Manager

jbarnette@vancepublishing.com

(847) 415-8005

**Lori Oehme**

Production Coordinator

loehme@vancepublishing.com

(847) 415-8009

## SUPPORT

**Ellen Roundtree**

Administrative Assistant

eroundtree@vancepublishing.com

(847) 415-8030

## SUBSCRIPTION SERVICES

(800) 808-2623 • vcwb@omeda.com

## VANCE

### VANCE PUBLISHING CORPORATION

**William C. Vance** Chairman of the Board

bvance@vancepublishing.com

**Peggy Walker** President

pwalker@vancepublishing.com

## MAIN OFFICE

P.O. Box 1400, Lincolnshire, IL 60069

Phone (847) 634-4347 • Fax (847) 634-4374

E-Mail: info@woodworkingnetwork.com

woodworkingnetwork.com



TOTAL STORAGE SOLUTIONS  
**Closets**



TOTAL STORAGE SOLUTIONS

\$10 AUGUST 2013

# closets

## HARDWARE INNOVATION

What We Saw in Vegas

Canary Closets & Cabinetry

Design Awards Programs

Visionary Products

VANCE  
CLOSETSDAILY.COM

Flip over for your issue of  
**Custom  
Woodworking**  
BUSINESS





### *Finishes:*

Chrome  
Satin Nickel  
Oil Rubbed Bronze  
White  
Brass

### *Our Products:*

Baskets  
Tie & Belt Racks  
Valet Rods  
Poles  
Pulls  
Hampers  
Mirrors  
Ironing Boards  
Shelf Fences  
Wine Racks  
Spice & Can Racks

## **Sidelines Inc.**

9332 East Raintree Drive, Suite 100

Scottsdale, AZ 85260

480-767-9091 877-501-2523

info@sidelinesinc.com

www.sidelinesinc.com



*The Art of Fine Storage™*

*sidelinesinc.com*





# I didn't know...

**Stiles has the largest factory-certified service team in the country.**

Whether you have a machine down and need it running now, or you just need answers to help you be more productive, Stiles has over 100 field service representatives available to you. Our FSRs are available fast, from any of our five regional centers across the country.

We have the right people, in the right place to provide you exceptional service, without exception.

For more information, contact John Casto at **616.698.7500** or **[jcasto@stilesmachinery.com](mailto:jcasto@stilesmachinery.com)**.  
Or visit us at **[www.stilesmachinery.com](http://www.stilesmachinery.com)**.

**stiles**

# Contents



## Features

- Hardware at AWFS Fair **06**
- Design Competitions **08**
- Canary's Wholesale Closets **10**
- Real Wood Veneer and Edging **14**
- Smart Depth Setting **21**
- Cabinet Refacing **41**

Functional hardware and other closets products are profiled in the Home Storage channel at [WoodworkingNetwork.com/closets](http://WoodworkingNetwork.com/closets)



## Departments

- 01** Custom Woodworking Business
- 16** Automating Custom Work
- 21** Pocket Hole Jig Makeover
- 26** Job Board
- 35** AWFS Visionary Awards
- 39** Classified Advertising
- 42** Ad Index
- 42** About Us

Cover, above: Rev-A-Shelf at AWFS Fair 2013

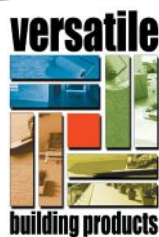


# BUILT THE WAY YOU LIKE IT!

## *Cabinets-Slatwall-Roll on Rock® Garage Flooring*



**Call 1-888-720-1650**  
**Free shipping on your first order.**



**Manufacturer Direct Prices**  
**[www.1dayepoxy.com](http://www.1dayepoxy.com)**



# Cabinetry Hardware Trends

2013 AWFS Fair attendees saw the latest designs in functional cabinet hardware and components.

**A**nother AWFS Fair is in the books and it was a rousing success with many cool new products shown, especially when it comes to cabinet hardware.

Among exhibiting companies were Accuride (back after a hiatus), Bainbridge, Comtrad Sourcing, Hafele America, Kemp Hardware & Supply, Rev-a-Shelf, Salice, Samet by Canmade, Sugatsune America and U.S. Futaba. Among numerous innovations, Rev-A-Shelf (featured on the cover) displayed its blind corner cabinet unit, making the unreachable accessible.

Accuride, Grass, Blum and Grass invited the Woodworking Network cameras in for booth tours. Accuride showed (among many items) heavy-duty slides, a retail display drawer at an angle, and a beta development of an electronic lock system for drawers, which integrates into the slides. Drawers open only with an electronic a key card.

Other hardware suppliers offered updates on their hottest products, such as Blum's award-winning Aventos lift system. Using Blum's Aventos lift system with Servo Drive technology, with one tap, doors open vertically, out of the way.

Hafele, which is having great success in lighting, showed its new version of LOOX LEDs, with diodes concealed and in some models, eliminated altogether.

Grass demonstrated its Tiomos Impresso concealed hinge system, which mounts in a free tool fashion and is available for frame and frameless.

**View Live From AWFS 2013 videos,**  
read on-the-scene news reports, photos  
and much more from AWFS 2013 online at  
[woodworkingnetwork.com/awfs-fair](http://woodworkingnetwork.com/awfs-fair).



## TRENDS HARDWARE AT AWFS 2013



Woodworking Network's video team captured the newest hardware innovations.





Spend your time  
**making money**  
 instead of closets

Plus Closets is your one-stop solution for design, manufacturing, and logistics.

**No equipment costs.**

**No maintenance. No inventory.**

**Order one project at a time,  
 when you need it.**

We'll take care of the rest—all you have to do is close the sale!

OUR SHOP IS YOUR SHOP

**PLUSCLOSETS™**

[www.PlusClosets.com](http://www.PlusClosets.com)

**866.826.PLUS**

953 North Larch Avenue, Elmhurst, IL 60126



Innovation  
 in **MOTION**



**SLIDING DOOR  
 HARDWARE  
 with SOFTCLOSE**

[www.richelieu.com](http://www.richelieu.com)

**1 800 361-6000 (CANADA)**

**1 800 619-5446 (US)**





Photo credits: Canary Closets  
and below, CJS Millwork

**ENTER  
NOW AND  
WIN**



## Custom Interior Design Awards

Cabinet and closets firms building custom interiors can win acclaim in the 2014 Design Awards at Cabinets & Closets Expo, April 9-11.

**M**ove over Emmys, Golden Globes and Oscars. The most anticipated industry awards of the season kick off this month with the 2014 Custom Woodworking Business Design Portfolio Awards and 2014 Closets Top Shelf Awards.

Now in its 21st year, Design Portfolio honors custom woodworkers for outstanding design and execution in seven categories: residential furniture, freestanding; residential furniture, built-in; architectural millwork; commercial/institutional; kitchen/bath cabinets; countertop/solid surface and specialty products. Entries can be uploaded at [woodworkingnetwork.com/designportfolio](http://woodworkingnetwork.com/designportfolio); all submissions will be accepted until October 31. Winners will be featured in a special December digital edition of *Custom Woodworking Business* as well as in the January 2014 print issue.

On the heels of Design Portfolio is the 8th annual Closets Top Shelf Awards, which honors designers for their creative closet and home organizational designs. Revamped categories

include: garage; walk-in closet – wood or melamine; reach-in closet – melamine or wire; home office – wood or melamine; showrooms; and specialty rooms (pantry, laundry, etc.). Entries will be accepted at [woodworkingnetwork.com/topshelf](http://woodworkingnetwork.com/topshelf) until Jan. 31, 2014. All winners will be highlighted in the May 2014 print issue of *Closets*.

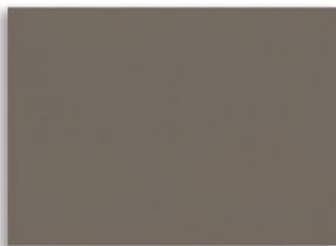
Beyond acknowledgment in both our print and digital publications, Design Portfolio and Top Shelf winners also will be feted at the only national live industry design awards ceremony, to be held during the 2014 Cabinets & Closets Conference & Expo at the Garden State Convention Center in Somerset, NJ, April 9-11. Check [woodworkingnetwork.com/closets](http://woodworkingnetwork.com/closets) for more show details.

View past **Design Portfolio** and **Top Shelf Award** winners at [WoodworkingNetwork.com/awards](http://WoodworkingNetwork.com/awards)





# Thinking Forward • • •



5101 umber supermatte 3dl



20007 grand canyon textured melamine



exotic veneer | acrylic | textured melamine | transitional wood shakers | veneer surfaces | supermatte 3dl thermofoil

Your source for inspired components

866-344-8132 | [www.northerncontours.com](http://www.northerncontours.com)



## Have It Your Way! EDGEBANDING

— One Roll Minimum —

Automatic • Peel & Stick • Pre-Glued • Iron On

### PVC

Edgebanding  
1700 Color Matches in Stock .018  
Thick 1-2-3 mm - Metallic's

### EeeZeeEdge

Peel & Stick  
"A Simple Solution that Really Sticks"  
1700 Color Matches  
30 Plus Veneer Species

### AirBanding

Pre-Glued PVC  
For Hot Air Edgebanders  
1700 Color Matches

### Wood Veneer

Edgebanding  
Over 30 Species • All widths  
Pre-Finished  
Custom Stained & Pre-Finished  
Thick Wood 1-2-3mm

### Veneer Sheets

10mil - 20mil - 2Ply and Phenolic Backers

### Glue for Edgebanders

Cartridges and Pellets

### Custom Services

\*Stained & Pre-Finished: One Roll Minimum  
\*ABS: Green Custom Matched Production Runs  
\*PVC: Custom Matched Production Runs  
\*Sitting: Custom Widths From Master Rolls  
\*Wood Grain Embossing: One Roll Minimum  
\*Hot Melt Coating: One Roll Minimum



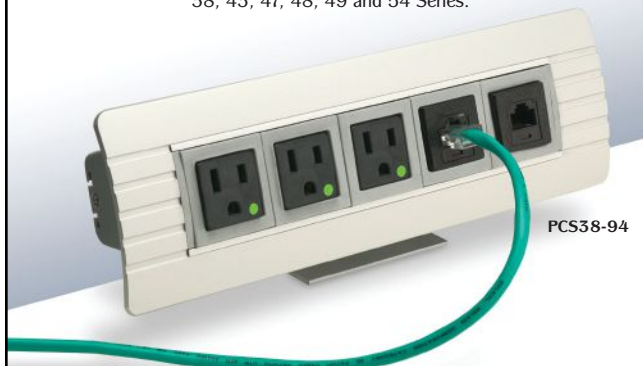
**EdgeCo**  
America's #1 Source for Edgebanding

1-800-644-6449 1-800-488-5441  
1-888-EDGECO1  
[www.edgecoinc.com](http://www.edgecoinc.com)

## "Green Dot" Hospital Grade Receptacles

Now available as an option in our PCS Series!

Electrical receptacles that are engineered to meet UL hospital grade requirements are critically important for use in hospital/medical facilities. And denoted by the Green Dot, they meet additional standards of grounding reliability, assembly integrity, terminal strength, impact resistance, and durability. We proudly offer them as a custom option in our PCS24, 25, 36, 36/2, 38, 43, 47, 48, 49 and 54 Series.



See [www.mockett.com/hospital-grade](http://www.mockett.com/hospital-grade)  
for complete information.

"FINE ARCHITECTURAL HARDWARE FOR YOUR FINE FURNITURE"®

**MOCKETT**  
DOUG MOCKETT & COMPANY, INC.

[www.mockett.com](http://www.mockett.com) • 800-523-1269

# Canary Closets & Cabinets' Cloud

**A MOVE FROM CONSUMER TO PURE WHOLESALE** closet production is not an easy transformation. But with large scale competitors across the country, you need to be efficient. For John and Amy Canary, that meant fully automating sales and manufacturing: capturing orders, and specifications, at point of sale, using it to drive production.

Their business, Canary Closets & Cabinetry, in Union, NJ, is in the process of this transition, John Canary says, moving first with closet components sales, to be followed by cabinet production.

"We are expecting to grow by leaps and bounds," Canary says. His 15-employee operation is well-equipped, operating a Holzma HPP 380 panel saw, a Homag edgebander, a Busellato point-to-point CNC, and a Weeke BHX 055 machining center. Also in the mix: a Gannemat downserter, a new Olma miter machine, and a Stiles cutoff saw with TigerStop.

To support the business change, Canary also adopted Allmoxy, a cloud-based computer software system that manages its entire business operation. Based in Ogden, UT, Allmoxy develops woodworking enterprise resource planning (ERP) systems that manage e-commerce, business accounting, bids and order entry, exporting files from customer input, and converting them to files that drive production machinery.

"We stumbled into Allmoxy at IWF in Atlanta last year and immediately knew it was the answer for streamlining our business," John Canary said in a phone call sounding like a canned presentation. "Not only is Allmoxy easy, it is inexpensive."

Since e-commerce would be critical, Canary retained a developer for two months to create software so clients could order online, intending to capture specs from customers to create cut-lists and drive manufacturing equipment. But, "We scrapped it because of Allmoxy," Canary says, since the application includes a turn-key e-commerce module.

"Our customers go on the site and place their order or request for a bid. When we get an order, we have output that we can send right to our machine," Canary says. "The bottom line is there is no reorder entry." For cabinetry product, Canary will switch to Cabinet Vision, since it is compatible with Allmoxy.

"My business is growing and we are working with fewer people," Canary says. "This is every bit as big an improvement as adding a CNC and edgebander. We're unstoppable."

**In production: a Holzma HPP 380 panel saw, a Homag edgebander, a Busellato point-to-point CNC, and a Weeke BHX 055 machining center. Also in the mix, a Gannemat downserter, an Olma miter machine, and a Stiles Machinery cutoff saw with a Tigerstop.**







## Pitching Closets Wholesale

Canary's online sales pitch for wholesale business is straightforward: "Are you a storage professional, contractor, builder or home improvement specialist looking for an expanded product line, added revenue or a better supplier? Canary Closets & Cabinetry has a complete wholesale program designed specifically for you. You get: State-of-the-art manufacturing without the investment; increased product range and quality, at no cost to you; costs controlled on every job; parts turnaround in as little as 5 days." Prospects are directed to the online store: [Canary.Allmoxy.com](http://Canary.Allmoxy.com)





# Real Clients. Real Business. ACSP Designer Certification Delivers. And here's the proof!

*"I would like to work with a certified closet designer in the Minneapolis, Minnesota area. Can you please send a list of designers in my area who are certified? Thank you."*

*- Kent C., Minneapolis, Minnesota*

This is just one of the **actual consumer requests** for a certified storage designer received via the ACSP website, proof positive that the custom storage consumer is seeing the importance of hiring a designer certified by the Association of Closet & Storage Professionals.

## Actual Clients. Real Business. How's that for proof?

By now, you've surely heard about ACSP Designer Certification, the exciting new program which, through application, examination, and evaluation, recognizes the true, established professionals in the custom storage industry. Certification truly is the only program of its kind available to help you differentiate yourself from your competition.

From New Jersey to California, from Minnesota to Texas, storage designers and consumers alike are realizing the value of this groundbreaking program. So what are you waiting for? Apply today.

**Apply for ACSP Designer Certification at**  
**[www.closets.org/certify](http://www.closets.org/certify)**



ASSOCIATION OF  
CLOSET AND STORAGE PROFESSIONALS<sup>SM</sup>



# We Won't Leave You Hanging...

At **Capella**, we have all your closet hardware and accessories solutions.

- Prompt Delivery and Service
- Competitive Prices
- Guaranteed Quality
- Custom Products to Fit Your Specific Needs

Available Colors: Polished Brass, Polished Chrome, Dull Brass, Dull Chrome, Dull Nickel, Oil-Rubbed Bronze & Black Matte



Accessories:



**Capella Hardware Co.**

1620 E. Miraloma Avenue • Placentia, CA 92870  
Toll Free: 888.658.5758 • 714.630.7868 • Fax: 714.630.5868  
capellahardware.com • sale@capellahardware.com



- Hook valets
- Shoe storage
- Clip-on shelf dividers
- Drawer insert dividers
- Dividers for jewelry, belts, ties, hosiery, and much more!

**CLEAR SYSTEMS**  
CUSTOM ACRYLIC ACCESSORIES

www.clearsystemsonline.com

ph: 800.399.8638 • 818.764.9223 • fax: 818.764.0203  
13438 Wyandotte St, N. Hollywood, CA 91605

Our Two-Tier Sliding Trays  
add beauty and expand storage.



*Two-Tier Tray featuring new  
"Sterling" colorway.*

Our new Two-Tier Sliding Trays perfectly compliment your drawer designs. They add storage and showcase preferred jewelry. Choose from 10 compartmented designs, and 4 new colors, all featuring scratch-resistant storage. Call or visit to learn more about our complete collection of designs for custom closet interiors.



October

octobercompany.com (800) 628-9346



# go wild



Reach out and touch an **exclusive** line of **textured** surfaces. With the natural look and feel of real wood, our **designer** finishes are a fraction of the cost. And, with 100% **recovered** wood material, you can help preserve habitats for our wild friends.

edgewood



complimentary samples available

www.KMLcorp.com (888) 358-5075

## Call for Entries!

Our 28th annual design contest is now open for entries! We specialize in furniture components, hardware and accessories, and seek your innovative ideas in those areas.

Entering is simple: Just go to [mockett.com/contest](http://mockett.com/contest) and submit on-line. Or see instructions for sending us an entry via mail or FedEx. Deadline is Tuesday after Labor Day, September 3. So hurry!

First Place award(s) receive \$1000, an engraved achievement trophy, and a royalty.



2009 Winner  
John O'Connor,  
Griffith, IN  
— Shelf Support



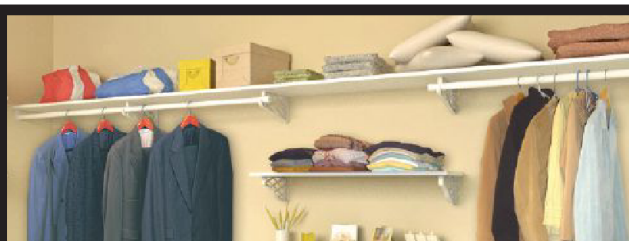
2010 Winner  
Rick Poliquin, Henderson, NV  
— Purse Hook



"FINE ARCHITECTURAL HARDWARE FOR YOUR FINE FURNITURE"®

**MOCKETT**  
DOUG MOCKETT & COMPANY, INC.

www.mockett.com • 800-523-1269



## Looking for SHELF APPEAL on a SHOESTRING BUDGET?

**VANGUARD'S QUICK, EASY AND ECONOMICAL  
CUSTOM STORAGE SYSTEM IS THE ANSWER.**

- Complete system of shelf supports, rods, joiners and more
- Fast and easy installation, saves time + money
- Economical alternative to wire shelving
- Strength tested up to 300lbs
- Patented and North American made



### FOR MORE INFORMATION

Contact Dave Abreo at 604.513.4483

or Toll-Free at 1.877.881.7875 x 4483

DABREO@VANGUARDSHELFSUPPORTS.COM

**Vanguard**

WWW.VANGUARDSHELVING.COM/TRADE.HTML